



W. LIM CORPORATION

CREATING THE NEXT WAVE IN FILTRATION



2024 CATALOG
www.wlimproducts.com

ABOUT W. LIM CORPORATION

William Lim, founder of W. Lim Corporation, started the company in 1980 as a koi wholesaler. Over the course of 30 years, he grew the company into a top-tier, internationally recognized manufacturer of high-end equipment for koi ponds, swimming pools and aquaponics equipment. W. Lim Corporation is known for its trademarked highly-efficient wave and dragon series pumps, as well as its high-output UV sterilizers.

Hector Mardueño started his company, Stonewall Creek, in 2019. He researched and tested all the equipment on the market to find the tools that would withstand Las Vegas heat, handle the biohazards and loads of natural swimming pools and koi ponds, and ultimately create ponds that were pristine in both aesthetics and safety. That's when he discovered W. Lim Corporation. After using their equipment to build several successful ponds, he became one of William's big

gest and most loyal clients. Then in September 2021, Hector Mardueño acquired W. Lim Corporation.

Through the name W. Lim Corporation, Hector will continue William's legacy and share the beauty of natural swimming pools, koi ponds and backyard beaches in a way that is clean and safe for pets, friends and family.



TABLE OF CONTENTS

| | |
|--|--------------------|
| Wave Series Pump..... | pages 3-6 |
| Dragon Series Pump..... | pages 7-11 |
| Wave UV Sterilizer..... | pages 12-13 |
| Skyhawk UV Sterilizer..... | pages 14-15 |
| Desert Eagle UV Sterilizer..... | pages 16-17 |
| Condor Al amalgam..... | pages 18-19 |
| UV & Ozone Hybrid Unit..... | page 20 |
| BioWave Series Filters..... | page 21 |
| EZR Filter..... | page 22 |
| Wave Vortex..... | page 23 |
| Performance Beads Series..... | page 24 |
| Replacement Parts..... | page 25-27 |

WAVE SERIES PUMPS

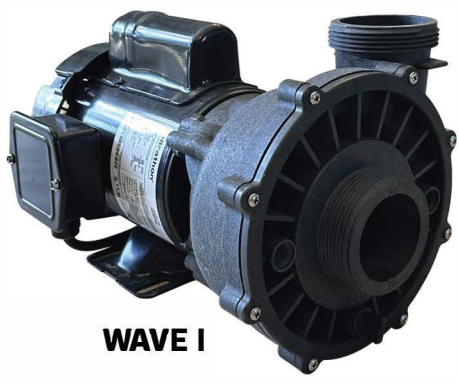
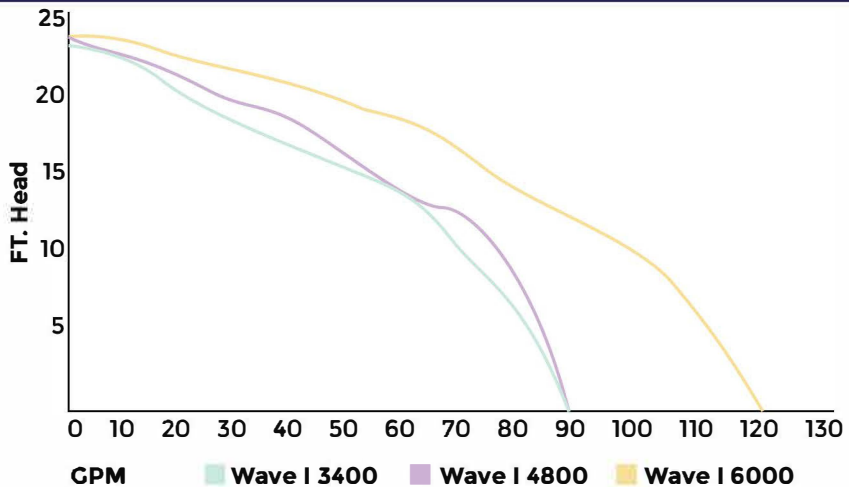
The Wave Series pumps have a high-performing, proprietary design. The impeller, motor and body are engineered to fit each motor exactly to create this signature pump. Features include emergency thermal protection shut-off, quick disconnect unions, 3-way discharge positions for less restriction, and a custom design for whisper quiet operation. Ideal for high flow/low pressure systems, these pumps are specifically engineered for pond construction.



Wave II

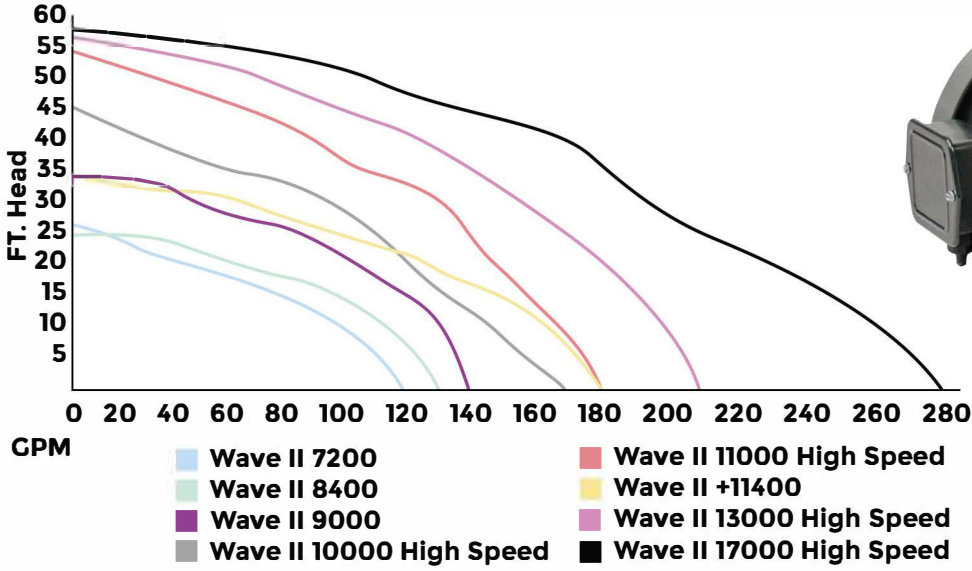


Wave I



WAVE I

| # | NAME | HP | MAX HEAD | GPH | MAX RPM | WATTS | VOLTS | ENCLOSURE | DIMENSION | IN/OUT | PRICE |
|--------|-------------|-------|----------|------|---------|-------|---------|-----------|-------------|--------|-------|
| 0509EX | WAVE I 3400 | 7/100 | 17' | 3420 | 1725 | 190 | 115/230 | TEFC | 21"x13"x12" | 1.5" | |
| 0501 | WAVE I 4800 | 1/8 | 24' | 4800 | 1725 | 262 | 115/230 | TEFC | 21"x12"x13" | 2" | |
| 0503 | WAVE I 6000 | 1/4 | 24' | 6000 | 1725 | 371 | 115/230 | TEFC | 21"x13"x12" | 2" | |



WAVE II

| # | NAME | HP | MAX HEAD | GPH | MAX RPM | WATTS | VOLTS | ENCLOSURE | DIMENSION | IN/OUT | PRICE |
|--------|------------------|-------|----------|-------|-------------|-------|---------|-----------|-------------|--------|-------|
| 0504 | Wave II 7200 | 1/4 | 26' | 7200 | 1425/1725 | 367 | 115/230 | TEFC | 21"x13"x12" | 1.5" | |
| 0505 | Wave II 8400 | 1/3 | 25' | 8400 | 1425/1725 | 406 | 115/230 | TEFC | 21"x13"x13" | 2" | |
| 0506 | Wave II 9000 | 1/2 | 33' | 9000 | 1425/1725 | 630 | 115/230 | TEFC | 21"x13"x14" | 2" | |
| 0508EX | Wave II+ 11400 | 1 | 34' | 11400 | 1425/1725 | 888 | 115/230 | TEFC | 21"x13"x15" | | |
| 0101-A | Wave II 10000 HS | 1 | 45' | 10020 | 3450 - 3600 | 1089 | 115/230 | TEFC | 21"x13"x12" | | |
| 0102-A | Wave II 11000 HS | 1 1/2 | 54' | 10980 | 3450 - 3600 | 1735 | 115/230 | TEFC | | | |
| 0103-A | Wave II 13000 HS | 2 | 58' | 13020 | 3450 - 3600 | 2288 | 115/230 | TEFC | | | |
| 0104-A | Wave II 17000 HS | 3 | 58' | 16980 | 3450 - 3600 | 2772 | 115/230 | TEFC | | | |



WAVE SERIES REPLACEMENT PARTS



WAVE FACEPLATE

| # | SIZE | PRICE |
|---------|------|-------|
| 5104-AS | 1.5" | |
| 5104 | 2" | |



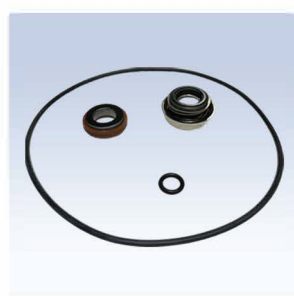
WAVE HOUSING

| # | SIZE | PRICE |
|------|------|-------|
| 9142 | 1.5" | |
| 5109 | 2" | |



PUMP UNION ASSEMBLY

| # | SIZE | PRICE |
|------|------|-------|
| 1105 | 1.5" | |
| 1106 | 2" | |



WAVE MASTER SEAL KIT

Includes: Price:
 Buna seal set
 O-Ring 111
 O-Ring 261



Plug Air Reliever & O-RING 111

| # | SIZE | PRICE |
|------|------|-------|
| 5102 | 1.5" | |
| 5102 | 2" | |



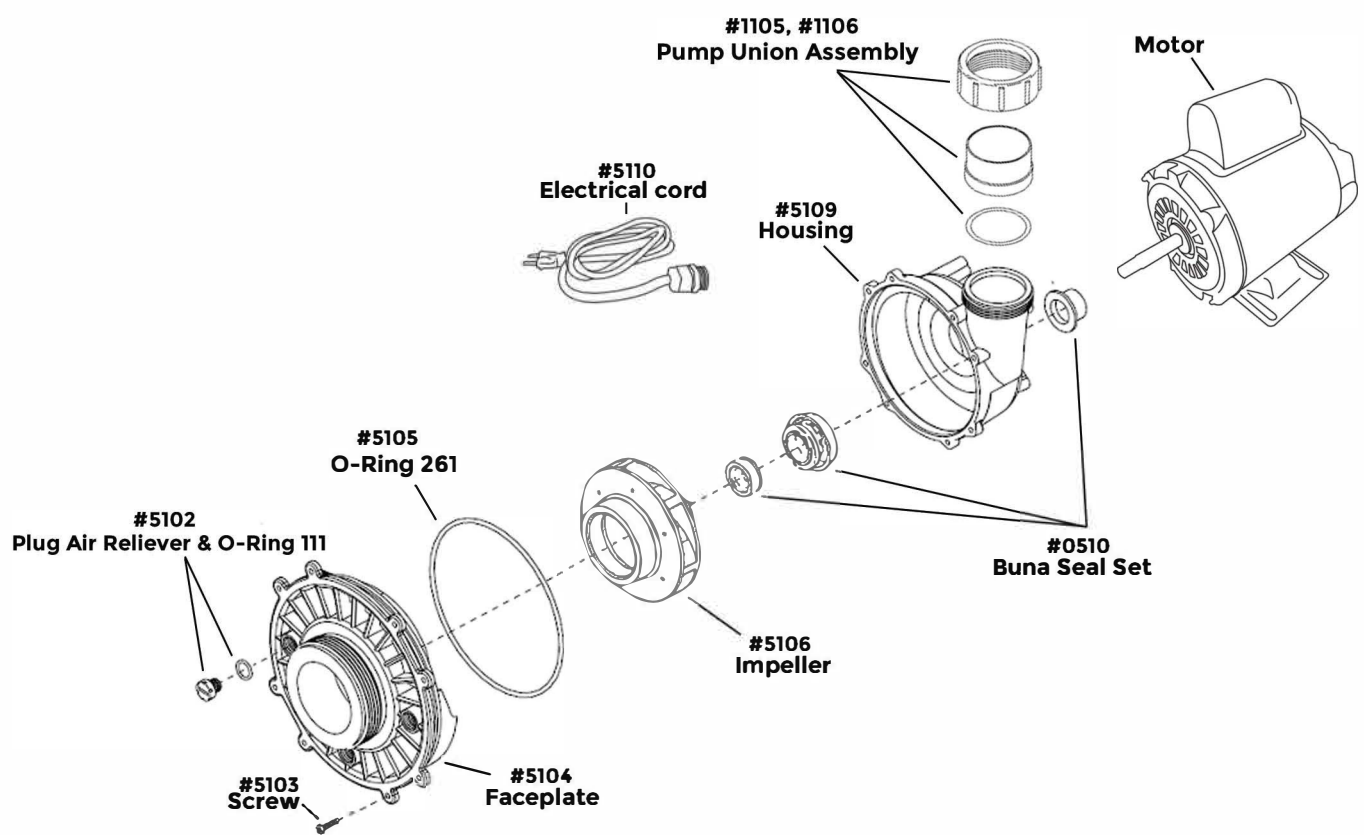
SCREW

| # | SIZE | PRICE |
|------|-------------|-------|
| 5103 | 32x7/16 PPH | |



ELECTRICAL CORD

| # | SIZE | PRICE |
|------|------|-------|
| 5110 | 6" | |



WAVE SERIES IMPELLERS & MOTORS

| IMPELLERS FOR WAVE SERIES | | |
|---------------------------|---------------------------------------|-------|
| # | Description | PRICE |
| 5106-0.125 | Impeller for Wave I 4800 | |
| 5106-0.25 | Impeller for Wave I 6000 | |
| 5106-0.25II | Impeller for Wave II 7200 | |
| 5106-0.33 | Impeller for Wave II 8400 | |
| 5106-0.50 | Impeller for Wave II 9000 | |
| 5106-1.00 | Impeller for Wave II+ 11400 | |
| 5106-HS1.50 | Impeller for Wave II 10000 High Speed | |
| 5106-HS2.00 | Impeller for Wave II 11000 High Speed | |
| 5106-HS3.00 | Impeller for Wave II 13000 High Speed | |
| 5106-1.00 | Impeller for Wave II 10000 High Speed | |



| MOTOR FOR WAVE SERIES | | |
|-----------------------|---|-------|
| # | Description | PRICE |
| 5125-EME | Motor for Wave I 2700 Open Drip | |
| 5125-Mar | Motor for Wave I 3400 | |
| 5111 | Motor for Wave I 4800 | |
| 5113 | Motor for Wave I 6000 | |
| 9062 | Motor for Wave III 10800 Variable Speed | |
| 5114 | Motor for Wave II 7200 | |
| 5115 | Motor for Wave II 8400 | |
| 5116 | Motor for Wave II 9000 | |
| 5118 | Motor for Wave II+ 11400 | |
| 5119 | Motor for Wave II 10000 High Speed | |
| 5120 | Motor for Wave II 11000 High Speed | |
| 5121 | Motor for Wave II 13000 High Speed | |
| 5122 | Motor for Wave II 17000 High Speed | |

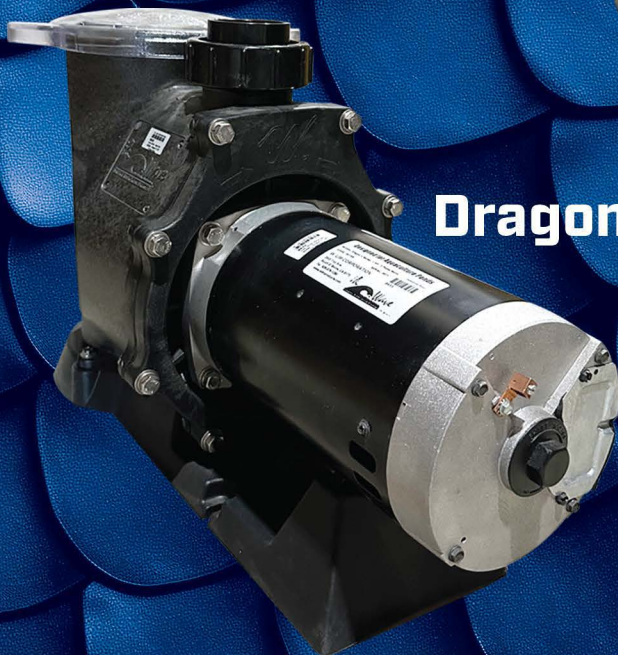
DRAGON SERIES



Dragon I

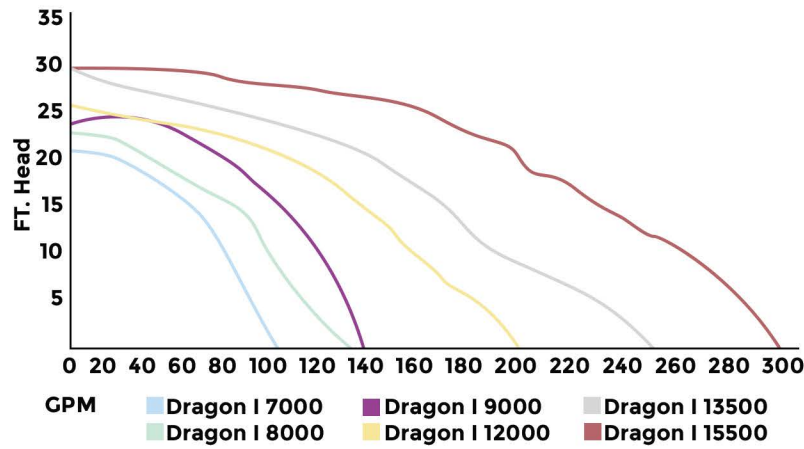


Dragon II

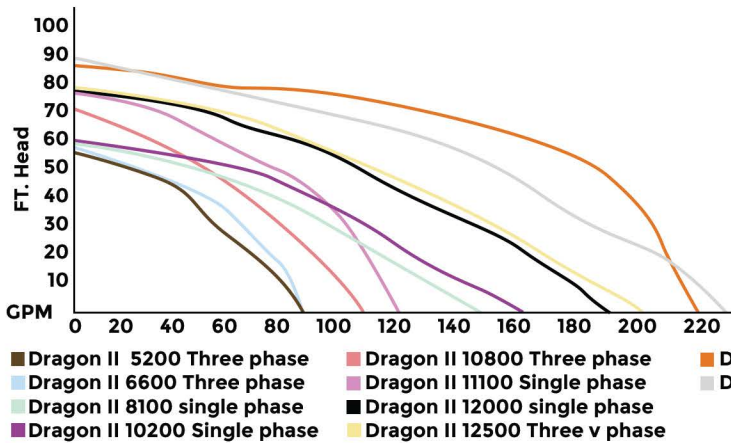


Dragon III

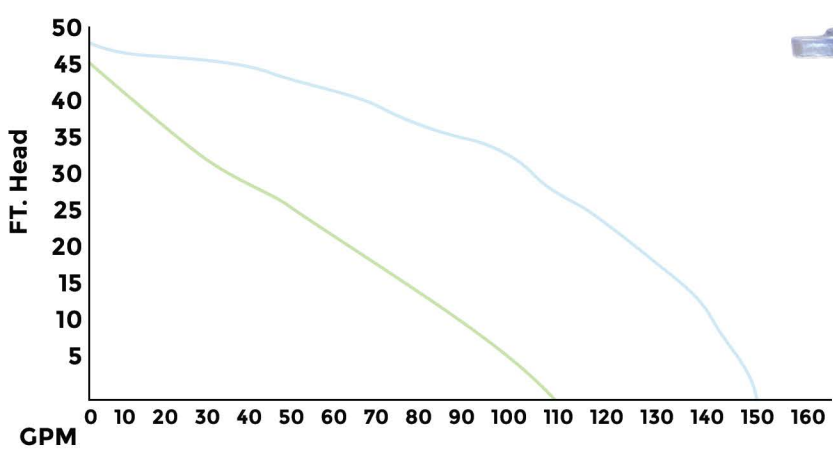
Our Dragon pumps have impellers that are specifically engineered to the body, making these pumps some of the most efficient pumps on the market. These pumps are self-priming and house true 56 from motors for cooler running and longer life. They also have built-in leaf traps making them perfect for use in pools or other high flow/low pressure projects.



| # | NAME | HP | MAX HEAD | GPH | MAX RPM | WATTS | VOLTS | ENCLOSURE | DIMENSION | IN/OUT | PRICE |
|------|----------------|-------|----------|-------|-----------|-------|---------|-----------|-------------|--------|-------|
| 0302 | Dragon I 7000 | 1/4 | 26' | 7000 | 1725 | 320 | 115/230 | TEFC | 30"x21"x14" | 2" | |
| 0303 | Dragon I 8000 | 1/3 | 28' | 8000 | 1725 | 456 | 115/230 | TEFC | 30"x21"x14" | 2" | |
| 0304 | Dragon I 9000 | 3/4 | 32' | 9000 | 1725 | 600 | 115/230 | TEFC | 30"x21"x14" | 2" | |
| 0305 | Dragon I 12000 | 1 | 35' | 12000 | 1425/1725 | 993 | 115/230 | TEFC | 30"x21"x14" | 2.5" | |
| 0306 | Dragon I 13500 | 1 1/2 | 39' | 13500 | 1425/1726 | 1256 | 115/230 | TEFC | 30"x21"x14" | 2.5" | |
| 0307 | Dragon I 15500 | 2 | 40' | 15500 | 1425/1727 | 1689 | 115/230 | TEFC | 30"x21"x14" | 2.5" | |



| # | NAME | HP | MAX HEAD | GPH | MAX RPM | WATTS | VOLTS | ENCLOSURE | DIMENSION | IN/OUT | PRICE |
|------|---------------------|-------|----------|-------|---------|-------|-------------|-----------|-------------|--------|-------|
| 0601 | Dragon II 8100 S.P | 1/2 | 47' | 8100 | 3450 | 312 | 115/230 | ODP | | 2" | |
| 0602 | Dragon II 10200 S.P | 3/4 | 60' | 5400 | 3450 | 389 | 115/230 | ODP | 30"x21"x14" | 2" | |
| 0603 | Dragon II 11100 S.P | 1 | 72' | 11100 | 3450 | | 115/230 | ODP | | 2" | |
| 0604 | Dragon II 12000 S.P | 1 1/2 | 80' | 12000 | 3450 | | 115/230 | ODP | 30"x21"x14" | 2" | |
| 0631 | Dragon II 5200 S.P | 1/2 | 56' | 5200 | 3450 | 649 | 208-230/460 | ODP | | 2" | |
| 0632 | Dragon II 6000 S.P | 3/4 | 70' | 6000 | 3450 | 743 | 208-230/460 | ODP | 29"x19"x14" | 2" | |
| 0633 | Dragon II 6600 S.P | 1 | 78' | 6600 | 3450 | 992 | 208-230/460 | ODP | 29"x19"x15" | 2" | |
| 0635 | Dragon II 10800 S.P | 2 | 79' | 10800 | 3450 | 1350 | 208-230/460 | ODP | 29"x19"x16" | 2" | |
| 0636 | Dragon II 13800 S.P | 3 | 90' | 13800 | 3450 | 1852 | 208-230/460 | ODP | 29"x19"x17" | 2" | |
| 0638 | Dragon II 12500 S.P | 5 | 95' | 12500 | 3450 | 2798 | 208-230/460 | ODP | | 2" | |

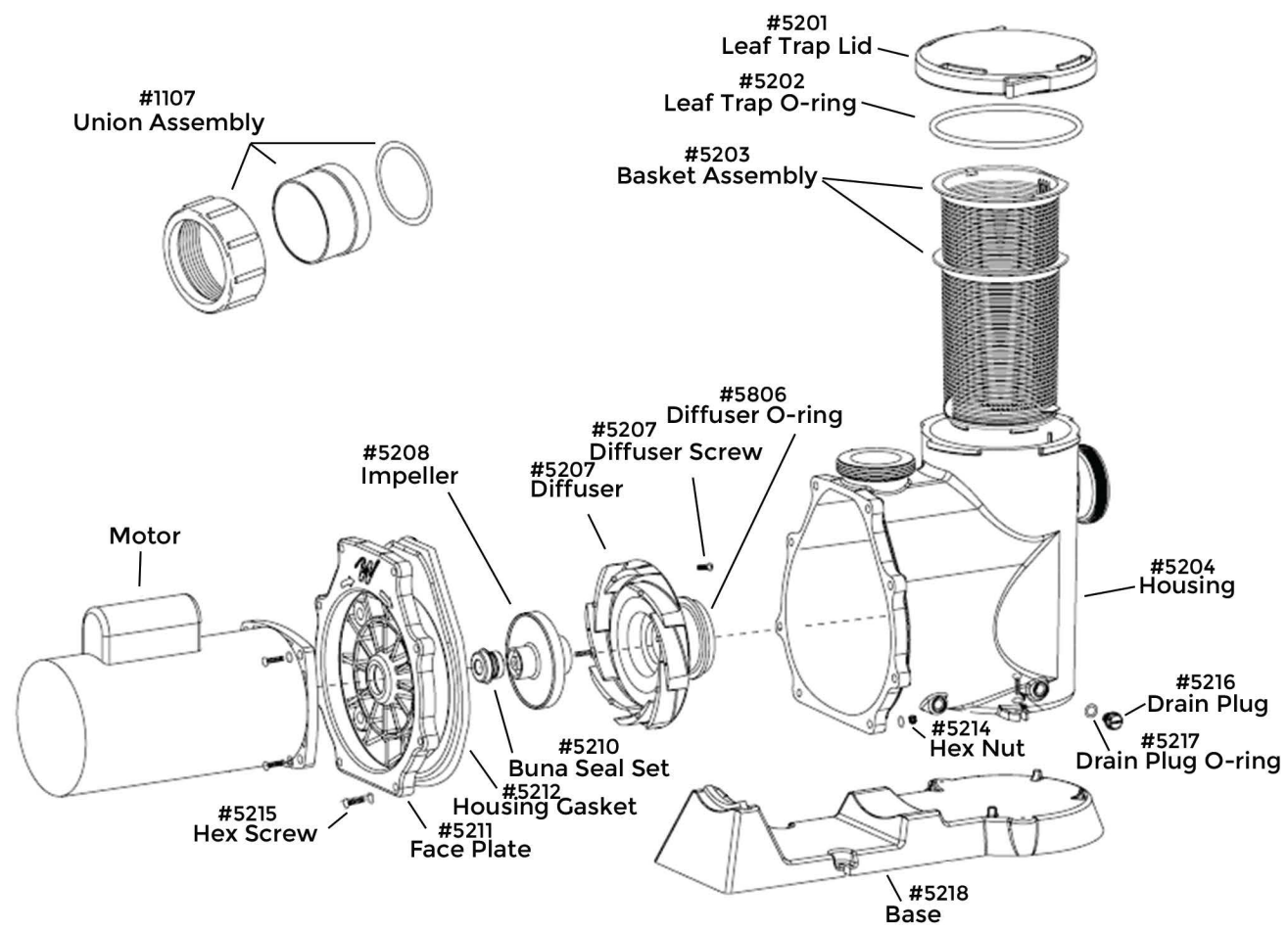


■ Dragon III 7200 Variable Speed
■ Dragon III 12000 Dual Voltage Variable Speed



Dragon III

| # | NAME | HP | MAX HEAD | GPH | MAX RPM | WATTS | VOLTS | ENCLOSURE | DIMENSION | IN/OUT | PRICE |
|-----------|----------------------|------|----------|-------|---------|-------|-------|-----------|-------------|--------|-------|
| 0332 | Dragon III 12000 V.S | 1.65 | 58' | 12000 | 3450 | 389 | | TEFC | 30"x21"x14" | 2" | |
| SNL-P3020 | Dragon III 2HP V.S | 2 | | | 1725 | | 230 | TEFC | | 2" | |
| SNL-P3021 | Dragon III 3HP V.S | 3 | | | 1725 | | 230 | TEFC | 30"x21"x14" | 2" | |



DRAGON SERIES REPLACEMENT PARTS



DRAGON FACEPLATE

| # | SIZE | PRICE |
|------|------|-------|
| 5211 | | |
| | | |



DRAGON HOUSING

| # | SIZE | PRICE |
|------|------|-------|
| 5204 | | |
| | | |



DRAIN PLUG & O-RING

| # | Name | PRICE |
|------|------------|-------|
| 5216 | Drain plug | |
| 5217 | O-Ring | |



DRAGON MASTER SEAL KIT

Includes: Buna seal set
Housing Gasket
Drain plug O-ring
Diffuser O-ring
Lid O-ring

Price:



PUMP UNION ASSEMBLY

| # | SIZE | PRICE |
|------|------|-------|
| 1107 | 2" | |
| 1108 | 2.5" | |



HEX SCREW & NUT

| # | SIZE | PRICE |
|------|------|-------|
| 5214 | | |
| 5215 | | |



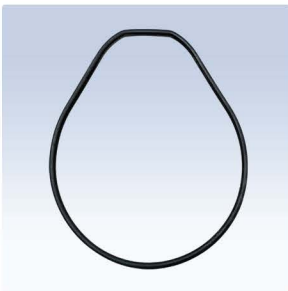
DIFFUSER

| # | SIZE | PRICE |
|---------|--------|-------|
| 5205-L | Large | |
| 5205-M | Medium | |
| 5205-SS | | |



BASKET FOR DRAGON

| # | SIZE | PRICE |
|------|------|-------|
| 5203 | | |
| | | |



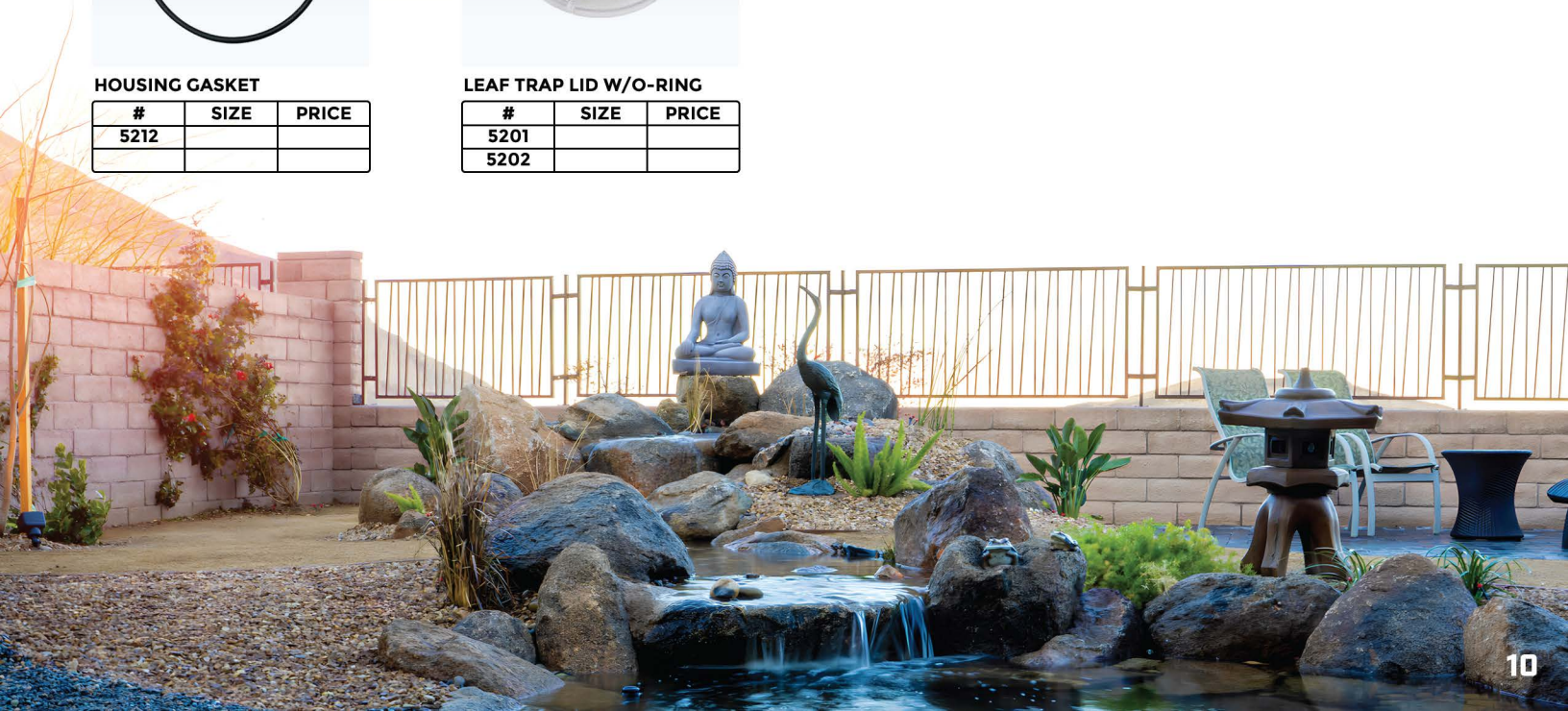
HOUSING GASKET

| # | SIZE | PRICE |
|------|------|-------|
| 5212 | | |
| | | |



LEAF TRAP LID W/O-RING

| # | SIZE | PRICE |
|------|------|-------|
| 5201 | | |
| 5202 | | |



DRAGON SERIES IMPELLERS & MOTORS

| IMPELLERS FOR WAVE SERIES | | |
|---------------------------|---|-------|
| # | Description | PRICE |
| 5208-0.25 | Impeller for Dragon I 7000 | |
| 5208-0.33 | Impeller for Dragon I 8000 | |
| 5208-0.75 | Impeller for Dragon I 9000 | |
| 5208-1.00 | Impeller for Dragon I 12000 | |
| 5208-1. | Impeller for Dragon I 13500 | |
| 5208-2.00 | Impeller for Dragon I 15500 | |
| 5228-1-0.50 | Impeller for Dragon II 8100 Single Phase | |
| 5228-1-0.75 | Impeller for Dragon II 10200 Single Phase | |
| 5228-1-1.00 | Impeller for Dragon II 11100 Single Phase | |
| 5228-1-1.5 | Impeller for Dragon II 12000 Single Phase | |
| 5228-3-0.50 | Impeller for Dragon II 5200 Three Phase | |
| 5228-3-0.75 | Impeller for Dragon II 6000 Three Phase | |
| 5228-3-1.00 | Impeller for Dragon II 6600 Three Phase | |
| 5228-3-2.00 | Impeller for Dragon II 10800 Three Phase | |
| 5228-3-3.00 | Impeller for Dragon II 13800 Three Phase | |
| 5228-3-5.00 | Impeller for Dragon II 12500 Three Phase | |
| 5208-0.25SS | Impeller for Dragon I 7000 (Stainless Steel) | |
| 5208-0.33SS | Impeller for Dragon I 8000 (Stainless Steel) | |
| 5208-0.75SS | Impeller for Dragon I 9000 (Stainless Steel) | |
| 5208-1.00SS | Impeller for Dragon I 12000 (Stainless Steel) | |
| 5208-1.50SS | Impeller for Dragon I 13500 (Stainless Steel) | |



| MOTOR FOR WAVE SERIES | | |
|-----------------------|---|-------|
| # | Description | PRICE |
| 5219 | Motor for Dragon I 7000 | |
| 5220 | Motor for Dragon I 8000 | |
| 5221 | Motor for Dragon I 9000 | |
| 5222 | Motor for Dragon I 12000 | |
| 5223 | Motor for Dragon I 135000 | |
| 5224 | Motor for Dragon I 15500 | |
| 0601-MT | Motor for Dragon II 8100 Single Phase | |
| 0602-MT | Motor for Dragon II 10200 Single Phase | |
| 0603-MT | Motor for Dragon II 11100 Single Phase | |
| 0604-MT | Motor for Dragon II 12000 Single Phase | |
| 0631-MT | Motor for Dragon II 5200 Triple Phase | |
| 0632-MT | Motor for Dragon II 6000 Triple Phase | |
| 0633-MT | Motor for Dragon II 6600 Triple Phase | |
| 0635-MT | Motor for Dragon II 10800 Triple Phase | |
| 0636-MT | Motor for Dragon II 13800 Triple Phase | |
| 0638-MT | Motor for Dragon II 12500 Triple Phase | |
| 9061 | Motor for Dragon III 7200 Variable Speed | |
| 9666W | Motor for Dragon III 12000 Variable Speed | |
| SNL-3020 | Motor for Dragon III 2HP Variable Speed | |
| 9060EZ | Motor for Dragon III 3 HP Variable Speed | |

WAVE UV STERILIZER

The Wave UV Sterilizer ensures efficient sterilization by producing high intensity Light that will help reduce and control pond algae and harmful living pathogens. Each Wave UV is equipped with a viewing port for easy indication of lamp operation and can be customized in number of lamps. The T5 style quartz lamp runs continuously for up to 9,000 hours before reaching the end of its useful life. these clarifiers are ideal for residential use and feature inlets and outlets capable of rotation to ensure a perfect fit everytime.





| # | NAME | LAMPS | WATTS | H/O? | GPH | REC. POND SIZE | DIMENSION | SCH | IN/OUT | PRICE |
|--------|--------------|-------|-------|------|------|----------------|-----------|-----|--------|-------|
| 3256 | Wave UV 14.8 | 1 | 14.8 | NO | | | | 40 | 2" | |
| 3251 | Wave UV 25 | 1 | 25 | NO | 3600 | 1500 gal. | | 40 | 2" | |
| 3252 | Wave UV 40 | 1 | 40 | NO | 4080 | 2000 gal. | | 40 | 2" | |
| 3253 | Wave UV 80 | 2 | 80 | NO | 5400 | 4000 gal. | | 40 | 2" | |
| 3254 | Wave UV 120 | 3 | 120 | NO | 6600 | 6000 gal. | | 40 | 2" | |
| 3255 | Wave UV 160 | 4 | 160 | NO | 7200 | 10000 gal. | | 40 | 2" | |
| 3232-1 | Wave UV 58 | 1 | 58 | YES | 3600 | 3500 gal. | | 40 | 2" | |
| 3232-2 | Wave UV 116 | 2 | 116 | YES | 6960 | 7000 gal | | 40 | 2" | |
| 3230 | Wave UV 66 | 1 | 66 | NO | | | | 40 | 2" | |

WAVE UV STERILIZER REPLACEMENT PARTS



Ballast

| # | WATTS | PRICE |
|----------|-------|-------|
| 3263-25 | 25W | |
| 3263-40 | 40W | |
| 3234-58 | 58W | |
| 3234-116 | 116W | |



Lamps

| # | WATTS | PRICE |
|-----------|---------|-------|
| 3261-14.8 | 14.8W | |
| 3261-25 | 25W | |
| 3261-40 | 40W | |
| 3232 | 58W H/O | |



Quartz Sleeve

| # | WATTS | PRICE |
|-------------|-------|-------|
| 3262-25 | 25W | |
| 3262-40 | 40W | |
| 3233 | 58W | |
| 6506-10.6CL | 66W | |



Power Supply

| # | WATTS | PRICE |
|------|-------|-------|
| 3246 | 25W | |
| 3247 | 40W | |
| 3245 | 58W | |
| 3507 | 66W | |

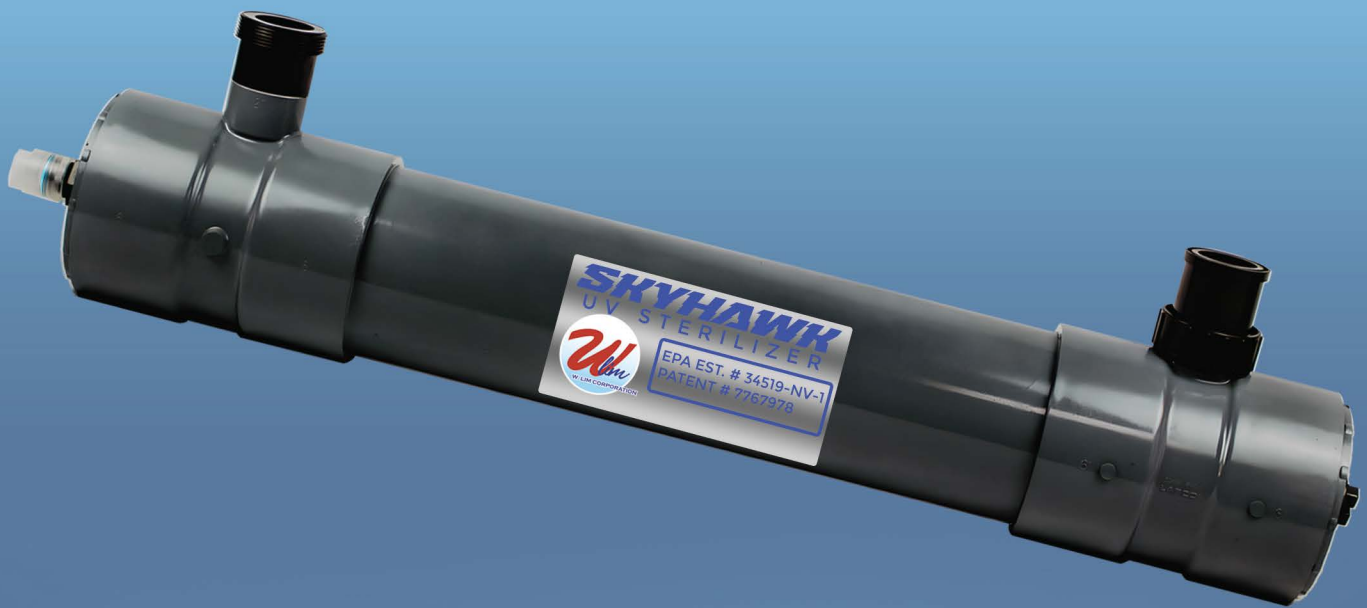


Pristine clear water is made possible by Wlim Corporation's UV Sterilizer unit

Design and built by Stonewall Creek

SKYHAWK UV STERILIZER SERIES

If you're looking for a highly customizable high-output sterilization for your project, the Skyhawks are the series for you. These contractor-grade UV units provide high contact time, high killing power, and can be built to whatever size you need.





| # | NAME | LAMPS | WATTS | H/O? | GPH | DIMENSION | SCH | IN/OUT | PRICE |
|--------|------------|-------|-------|------|-------|------------|-----|--------|-------|
| 7105 | Model 5 | 1 | 36 | YES | 3240 | 6" Chamber | 40 | 2" | |
| 7115 | Model 5 | 2 | 72 | YES | | 6" Chamber | 40 | 2" | |
| 7116 | Model 5 | 3 | 108 | YES | | 6" Chamber | 40 | 2" | |
| 7109 | Model 5 | 4 | 144 | YES | | 6" Chamber | 40 | 2" | |
| 7106 | Model 10.3 | 1 | 58 | YES | 4980 | 6" Chamber | 40 | 2" | |
| 7106-2 | Model 10.3 | 2 | 116 | YES | | 6" Chamber | 40 | 2" | |
| 7113 | Model 10.6 | 1 | 66 | YES | 4980 | 6" Chamber | 40 | 2" | |
| 7112 | Model 10.6 | 2 | 132 | YES | | 6" Chamber | 40 | 2" | |
| 7107 | Model 20 | 1 | 86 | YES | 7080 | 6" Chamber | 40 | 2" | |
| 7108 | Model 40 | 1 | 119 | YES | 10320 | 6" Chamber | 40 | 2" | |

SKYHAWK REPLACEMENT PART



Quartz Sleeve

| # | WATTS | PRICE |
|-------------|-------|-------|
| 3506-05 | 36W | |
| 3506-10 | 58W | |
| 3506-10.3CL | 66W | |
| 3506-20 | 86W | |
| 3506-40 | 119W | |



Lamps

| # | WATTS | PRICE |
|-------------|-------|-------|
| 6505-05C | 36W | |
| 6505-10C | 58W | |
| 6505-10.3CL | 66W | |
| 6505-20CL | 86W | |
| 6505-40CL | 119W | |



Ballast

| # | WATTS | PRICE |
|-----------|-------|-------|
| 3507-05 | 36W | |
| 3507-10 | 58W | |
| 3507-10.3 | 66W | |
| 3507-20 | 86W | |
| 3507-40 | 119W | |



Power Supply

| # | WATTS | PRICE |
|------|--------------|-------|
| 7301 | 36W | |
| 7303 | 108W(3Lamps) | |
| 7304 | 144W(4Lamps) | |
| 7306 | 66W | |
| 7310 | 86W | |
| 7314 | 119W | |

Pristine clear water is made possible by Wlim Corporation's UV Sterilizer unit



Design and built by Stonewall Creek

DESERT EAGLE

U V S T E R I L I Z E R

Our high-output industrial-grade sterilizer have a high interior and exterior UV resistance and are able to support high wattage and high sun-exposure. These UVs feature strong schedule 80 bodies and can be custom ordered to accomodate 2", 3" ,4" or 6" inlet and outlets.





| # | NAME | LAMPS | WATTS | H/O? | MAXFLOW(GPH) | DIMENSION | SCH | PRICE |
|----------|-------------|-------|-------|------|--------------|-----------|-----|-------|
| 3502-66 | Model 610.6 | 1 | 66 | YES | 4980 | | 80 | |
| 3502-132 | Model 610.6 | 2 | 132 | YES | | | 80 | |
| 3502-198 | Model 610.6 | 3 | 198 | YES | | | 80 | |
| 3502-264 | Model 610.6 | 4 | 264 | YES | | | 80 | |
| 3503-86 | Model 620 | 1 | 86 | YES | 7080 | | 80 | |
| 3503-172 | Model 620 | 2 | 172 | YES | | | 80 | |
| 3503-258 | Model 620 | 3 | 258 | YES | | | 80 | |
| 3503-344 | Model 620 | 4 | 344 | YES | | | 80 | |
| 3504-119 | Model 640 | 1 | 119 | YES | 10320 | | 80 | |
| 3504-238 | Model 640 | 2 | 238 | YES | | | 80 | |
| 3504-357 | Model 640 | 3 | 357 | YES | | | 80 | |
| 3504-476 | Model 640 | 4 | 476 | YES | | | 80 | |

DESERT EAGLE REPLACEMENT PART



Quartz Sleeve

| # | WATTS | PRICE |
|----------|-------|-------|
| 3506-20Q | 66W | |
| 3506-20Q | 86W | |
| 3506-40Q | 119W | |



Ballast

| # | WATTS | PRICE |
|----------|-------|-------|
| 3507-20B | 66W | |
| 3507-20B | 86W | |
| 3507-40B | 119W | |



Lamps

| # | WATTS | PRICE |
|----------|---------|-------|
| 3505-20L | 66W H/O | |
| 3505-20L | 86W H/O | |
| 3505-40L | 119 H/O | |



Power Supply


| # | WATTS | PRICE |
|------------|--------------|-------|
| 3507-20-P1 | 66W | |
| 3507-20-P1 | 86W | |
| 3507-20-P3 | 258W(3Lamps) | |
| 3507-20-P4 | 344W(4Lamps) | |
| 3507-40-P1 | 119W | |
| 3507-40-P3 | 357W(3Lamps) | |
| 3507-40-P4 | 476W(4Lamps) | |

Pristine clear water is made possible by Wlim Corporation's UV Sterilizer unit



Design and built by Stonewall Creek

CONDOR AMALGAM



The Condor amalgam UVs utilize the highest output lamp rated at 600,000 micro watts, yielding high-grade sanitation perfect for residential pools and commercial and industrial applications. These UVs utilize fewer, high-output lamps to produce higher UV output and can be custom built to accommodate 2"-24" bodies and inlets/outlets. With a useful life of 12,000 hours and transmittance loss of only 50,000 microwatts/cm, it's no wonder our units can be found in natural pools, aquaculture, hatcheries, and water treatment plants across the country! Call for custom sizes and pricing.



CONDOR AMALGAM SERIES

| # | NAME | LAMPS | WATTS | H/O? | MAXFLOW(GPH) | DIMENSION | SCH | PRICE |
|------|----------------|-------|-------|------|--------------|------------|-----|-------|
| 3271 | Condor 168-6" | 1 | 168 | YES | | 6" Chamber | 80 | |
| 3272 | Condor 336-6" | 2 | 336 | YES | | 6" Chamber | 80 | |
| 3273 | Condor 504-6" | 3 | 504 | YES | | 6" Chamber | 80 | |
| 3274 | Condor 672-6" | 4 | 672 | YES | | 6" Chamber | 80 | |
| 3201 | Condor 200-6" | 1 | 200 | YES | | 6" Chamber | 80 | |
| 3202 | Condor 400-6" | 2 | 400 | YES | 1800 | 6" Chamber | 80 | |
| 3203 | Condor 600-6" | 3 | 600 | YES | 3000 | 6" Chamber | 80 | |
| 3204 | Condor 800-6" | 4 | 800 | YES | 3000 | 6" Chamber | 80 | |
| 3211 | Condor 300-6" | 1 | 300 | YES | 12000 | 6" Chamber | 80 | |
| 3212 | Condor 600-6" | 2 | 600 | YES | 12000 | 6" Chamber | 80 | |
| 3213 | Condor 900-6" | 3 | 900 | YES | 12000 | 6" Chamber | 80 | |
| 3214 | Condor 1200-6" | 4 | 1200 | YES | 7500 | 6" Chamber | 80 | |

CONDOR AMALGAM REPLACEMENT PART



Quartz Sleeve

| # | WATTS | PRICE |
|------|-------|-------|
| 3205 | 168W | |
| 3208 | 200W | |
| 3210 | 300W | |



Lamps

| # | WATTS | PRICE |
|-------|-------|-------|
| 168WA | 168W | |
| 3206 | 200W | |
| 3209 | 300W | |
| | 375W | |



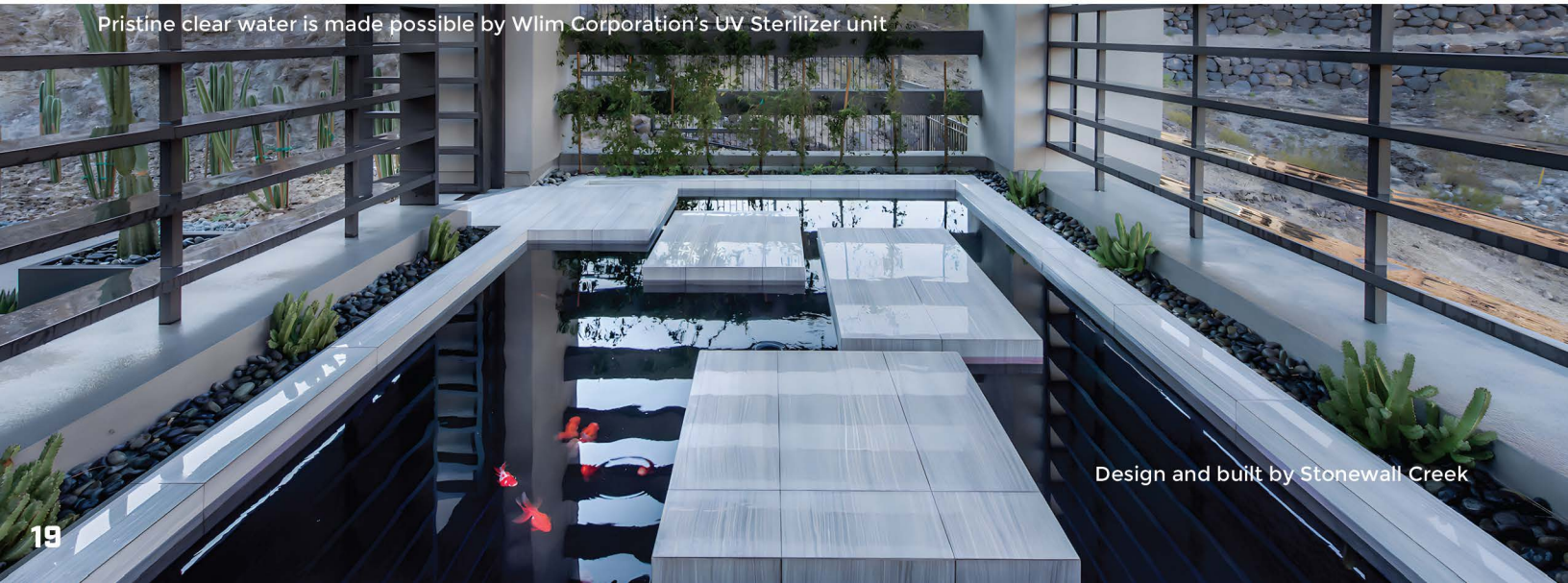
Ballast

| # | WATTS | PRICE |
|------|-------|-------|
| 3207 | 168W | |
| | 200W | |
| | 300W | |
| | 375W | |



Power Supply

| # | WATTS | PRICE |
|--------|-------------------|-------|
| 3271-P | 168W(1Lamp) | |
| 3272-P | 336W(2Lamps) | |
| 3273-P | 504W(3Lamps) | |
| 3274-P | 672W(4Lamps) | |
| 3261-1 | 200W-300(Lamp) | |
| 3261-2 | 400W-600(2Lamps) | |
| 3261-3 | 600W-900(3Lamps) | |
| 3261-4 | 800W-1200(4Lamps) | |



Pristine clear water is made possible by Wlim Corporation's UV Sterilizer unit

Design and built by Stonewall Creek

INTRODUCING THE UV AND OZONE HYBRID



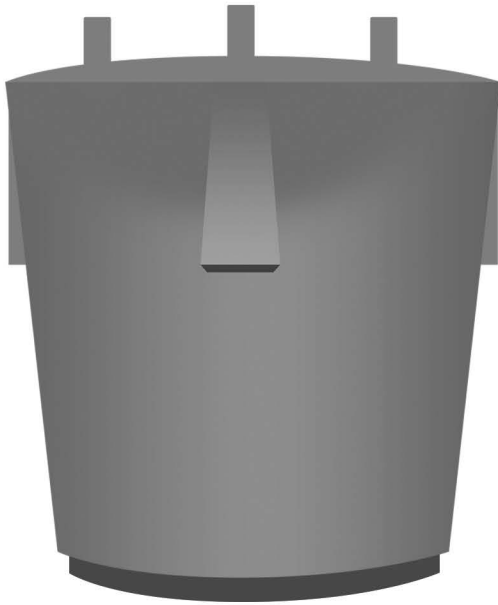
BIOWAVE FILTER SERIES



For ponds and pools with organic matter, our BioWave filters are high quality, energy efficient and high performing filters that contain larger media, allowing for more flow while still providing quality biological filtration. They are designed to preserve the delicate useful bacteria during backwash and to provide a large surface area for the bacteria to live and flourish. The BioWaves utilize a backwashing technique using a blower system that agitates the water to produce “tumbling” during backwash. The blower pushes air into the filter causing the media to mix and tumble. This results in cleaning bioflocks that are attached to each piece while preserving beneficial bacteria within the filter. Great for general filtering purposes.

| # | NAME | GPH | REC. POND SIZE | MEDIA VOLUME | WATER VOLUME | IN/OUT | PRICE |
|------|------------------------|------|----------------|---------------------|--------------------|--------|-------|
| 2401 | BioWave Plus Filter 36 | 3000 | 6000 gal. | 2.5 ft ³ | 36 ft ³ | 2" | |
| 2402 | BioWave Plus Filter 48 | 6180 | 8000 gal. | 3.5 ft ³ | 48 ft ³ | 2" | |
| 2403 | BioWave Plus Filter 60 | 6960 | 10000 gal. | 4.5 ft ³ | 60 ft ³ | 2" | |

EZR FILTER



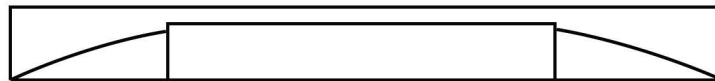
Our EZR filter provides layered sand and gravel filtering as close to natural filtering processes as possible while requiring less maintenance than other filtering devices. Upflowing through different levels of natural media mechanically traps and breaks down debris and performs biological filtering while offering unmatched polishing capabilities. This filter features a blower for extremely easy backwashing and preformed flat spots for optional bulkheads.

EZR BIOLOGICAL FILTER

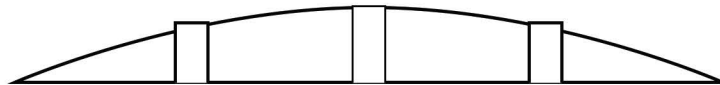
Product #: 3002

Size: 5000 gal.

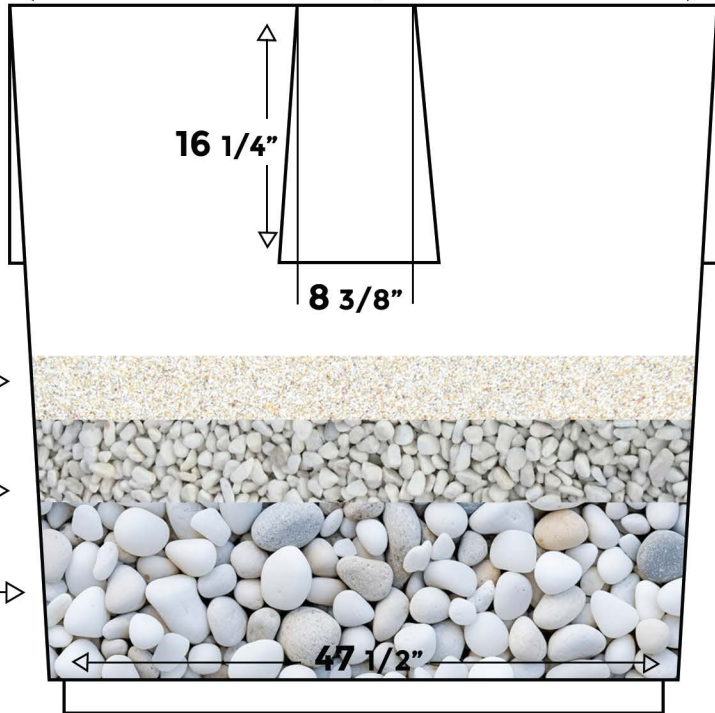
Price:



← 57 5/8" →



← 53 1/2" →



49 1/2"

Silica Sand →

Pea Gravel →

Large Gravel →

47 1/2"

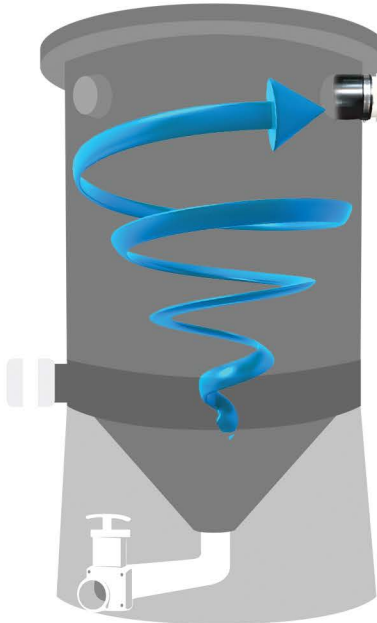
← 45 1/2" →

WAVE VORTEX SERIES

Our signature Wave Series filters feature three unique filtration devices. The **Wave Bio-Reactor** Settlement Tank contain floating media that provides biofiltration. The **Vortex Filter** uses a vortex bottom for mechanical filtering with space above it for biological filtering. The **Vortex Settlement Tank** provides excellent mechanical filtering by settling solids to the bottom of the vortex shaped bottom. At recommended flow rates, it is possible to remove almost all of the suspended solids. All Wave Series filter devices feature three outlet ports that allow for any configuration and dome-shaped lids that prevents rain, leaves, and other matter from accumulating on top. With an industrial strength body made of poly UV resistant material, these filters will not deteriorate under long-term sun exposure.

| # | NAME | REC. POND SIZE | MEDIA VOLUME | WATER VOLUME | IN/OUT | PRICE |
|------|------------------------------------|----------------|--------------------|--------------------|--------|-------|
| 2501 | Wave 24 Vortex filter | 1000 gal | 4 ft ³ | 24 ft ³ | 3" | |
| 2502 | Wave 24 Vortex Settlement tank | 1000 gal | | 24 ft ³ | 3" | |
| 2505 | Wave 24 Bioreactor Settlement tank | 1000 gal | | 24 ft ³ | 3" | |
| 2701 | Wave 36 Vortex Filter | 5000 gal | 10 ft ³ | 36 ft ³ | 4" | |
| 2702 | Wave 36 Vortex Settlement tank | 5000 gal | | 36 ft ³ | 4" | |
| 2705 | Wave 36 Bioreactor Settle tank | 5000 gal | | 36 ft ³ | 4" | |
| 2704 | Wave 48 Vortex Filter | 15000 gal | | | 4" | |
| 2706 | Wave 48 Vortex Settlement tank | 15000 gal | | | 4" | |
| 2707 | Wave 48 Bioreactor Settlement tank | 15000 gal | | | 4" | |

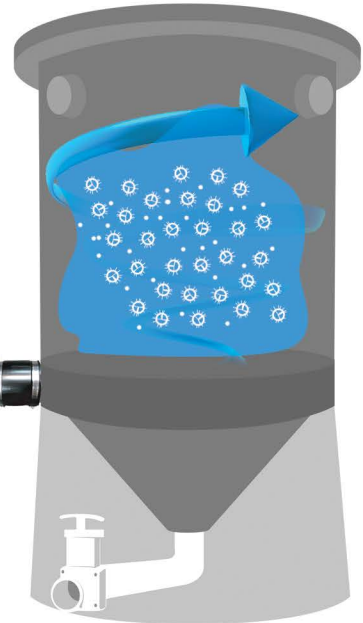
VORTEX SETTLEMENT TANK



VORTEX FILTER



BIO-REACTOR



For the highest level of clarity and filtration, our bio-reactor, vortex filter, and vortex settlement tank can be combined into a top-tier multifilter system.

PERFORMANCE BEAD SERIES FILTER



Our performance bead filters are engineered to function with low pressure, helping with energy efficiency. The fine, sinking media allows mechanical and biological filtration and expert-level polishing. The rinse cycle feature prerinses floating media after backwashing and discharges the rinsed water into a waste line. This filter also features a bottom sludge drain which allows heavy settlement to discharge from the bottom without disturbing the media. Finally, a filter bypass allows complete isolation of the filter media from your pond without disturbing normal water flow.

| # | NAME | GPH | REC. POND SIZE | MEDIA VOLUME | WATER VOLUME | IN/OUT | PRICE |
|------|----------------------------|------|-----------------|---------------------|--------------------|--------|-------|
| 2321 | Performance Bead Filter 36 | 3000 | 2500-5000 gal. | 2.5 ft ³ | 36 ft ³ | 2" | |
| 2322 | Performance Bead Filter 36 | 3900 | 5000-8000 gal. | 3.5 ft ³ | 48 ft ³ | 2" | |
| 2323 | Performance Bead Filter 36 | 4500 | 8500-10000 gal. | 4.5 ft ³ | 60 ft ³ | 2" | |



REPLACEMENT PARTS



CLEAR SPA AIR VALVE

| # | SIZE | PRICE |
|------|------|-------|
| 1414 | 2" | |
| | | |



LEAF TRAP BASKET

| # | SIZE | PRICE |
|------|------|-------|
| 1101 | 1.5" | |
| 1102 | 2" | |



BASKET FOR DRAGON

| # | SIZE | PRICE |
|------|------|-------|
| 3005 | 1 hp | |
| 3006 | 2 hp | |



PUMP UNION MALE ADAPTOR

| # | SIZE | PRICE |
|------|------|-------|
| 1109 | 1.5" | |
| 1110 | 2" | |



RUBBER COUPLINGS

| # | SIZE | PRICE |
|------|------|-------|
| 1112 | 3" | |
| 1113 | 4" | |



PUMP BASE (LARGE)

| # | SIZE | PRICE |
|------|-----------------|-------|
| 1001 | 15.25"x8.25"x1" | |



PUMP BASE

| # | SIZE | PRICE |
|------|-----------------|-------|
| 1002 | 6.5"x3.75"x3/4" | |



LEAF TRAP

| # | SIZE | PRICE |
|------|------|-------|
| 1101 | 1.5" | |
| 1102 | 2" | |



LEAF TRAP LID

| # | SIZE | PRICE |
|------|------|-------|
| 1095 | 1.5" | |
| | 2" | |



LEAF TRAP O-RING

| # | SIZE | PRICE |
|------|------|-------|
| 1099 | 2" | |



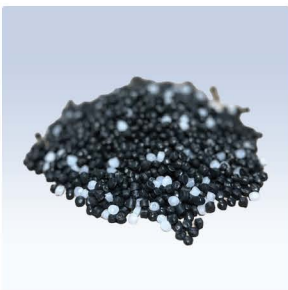
AIR BLOWER

| # | SIZE | PRICE |
|------|------|-------|
| 3005 | 1 hp | |
| 3006 | 2hp | |



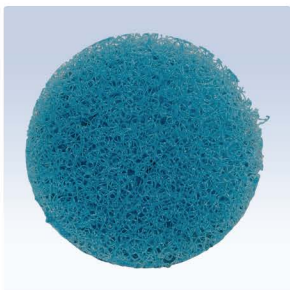
FLOATING MEDIA

| # | SIZE | PRICE |
|------|------|-------|
| 4902 | | |



PERFORMANCE BEADS

| # | SIZE | PRICE |
|------|------|-------|
| 1095 | 1.5" | |
| | 2" | |



FILTER MAT

| # | SIZE | PRICE |
|------|------------|-------|
| 3106 | 24"(Round) | |



BASKET VALVE SCREEN

| # | SIZE | PRICE |
|------|------|-------|
| 1206 | 1.5" | |
| 1207 | 2" | |
| 1208 | 3" | |



UNIONS

| # | SIZE | PRICE |
|-------|---------|-------|
| 1223 | 1"-FC | |
| 1223W | 1"-WW | |
| 1224 | 1.5"-FC | |
| 1224W | 1.5"-WW | |
| 1225 | 2"-FC | |
| 1225W | 2"-WW | |
| 1226 | 3"-FC | |

FC = FloControl
WW = WaterWay



BULKHEAD FITTINGS

| # | SIZE | PRICE |
|------|------|-------|
| 1209 | 1/2" | |
| 1210 | 3/4" | |
| 1211 | 1" | |
| 1212 | 1.5" | |
| 1213 | 2" | |
| 1214 | 3" | |
| 1215 | 4" | |



PVC BULKHEAD FITTINGS

| # | SIZE | PRICE |
|------|---------|-------|
| 1216 | 3/4"(T) | |
| 1217 | 1"(T) | |
| 1218 | 1"(S) | |
| 1219 | 1.5"(T) | |
| 1220 | 1.5"(S) | |
| 1221 | 2"(T) | |
| 1222 | 2"(S) | |



PVC FLEXIBLE PIPES

| # | SIZE | PRICE |
|------|------|-------|
| 1310 | 1/2" | |
| 1311 | 3/4" | |
| 1312 | 1" | |
| 1313 | 1.5" | |
| 1314 | 2" | |
| 1315 | 3" | |
| 1316 | 4" | |



POND JET

| # | SIZE | PRICE |
|------|------|-------|
| 1304 | 3/4" | |
| 1305 | 1.5" | |
| 7080 | Jet | |



PVC SWING CHECK VALVE

| # | SIZE | PRICE |
|------|---------|-------|
| 1401 | 1"(S) | |
| 1402 | 1.5"(S) | |
| 1403 | 2"(S) | |
| 1404 | 3"(S) | |
| 1405 | 4"(S) | |



PVC SWING CHECK VALVE(CLEAR)

| # | SIZE | PRICE |
|------|------|-------|
| 1406 | 1.5" | |
| 1407 | 2" | |
| 1408 | 3" | |
| 1409 | 4" | |



TRUE UNION SWING CHECK VALVE

| # | SIZE | PRICE |
|------|---------|-------|
| 1410 | 1.5"(S) | |
| 1411 | 2"(S) | |



TRUE UNION SWING CHECK VALVE

| # | SIZE | PRICE |
|------|---------|-------|
| 1412 | 1.5"(T) | |
| 1413 | 2"(T) | |



KNIFE VALVE

| # | SIZE | PRICE |
|-------|--------|-------|
| 1504 | 1.5" | |
| 1505 | 2" | |
| 1506 | 3" | |
| 1507 | 4" | |
| 1505S | 2"SSP | |
| 1506S | 3"SSP | |
| 1507S | 4"SSP | |
| 1508S | 6"SSP | |
| 1509S | 8"SSP | |
| 1510S | 10"SSP | |
| 1511S | 12"SSP | |



3-WAY VALVE

| # | SIZE | PRICE |
|------|---------|-------|
| 1502 | 1.5"x2" | |
| 1503 | 2"x2.5" | |



PVC SINGLE ENTRY BALL VALVES

| # | SIZE | PRICE |
|------|------|-------|
| 1531 | 1.5" | |
| 1532 | 2" | |
| 1533 | 3" | |
| 1534 | 4" | |



PVC BALL VALVE

| # | SIZE | PRICE |
|------|------|-------|
| 1511 | 1" | |
| 1512 | 1.5" | |
| 1513 | 2" | |

S = Slip
T = Threaded
SSP = Stainless Steel Paddle



PVC BALL VALVES

| # | SIZE | PRICE |
|------|------|-------|
| 1521 | 1/2" | |
| 1522 | 3/4" | |
| 1523 | 1" | |
| 1524 | 1.5" | |
| 1525 | 2" | |



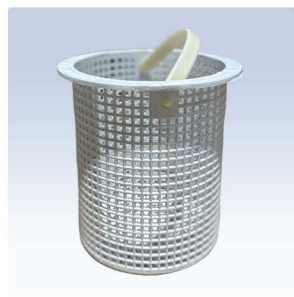
BALL VALVES(w/EPDM SEAL)

| # | SIZE | PRICE |
|------|------|-------|
| 1541 | 1.5" | |
| 1542 | 2" | |
| 1543 | 3" | |
| 1544 | 4" | |



NO-NICHE SKIMMER

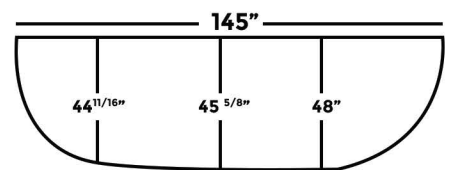
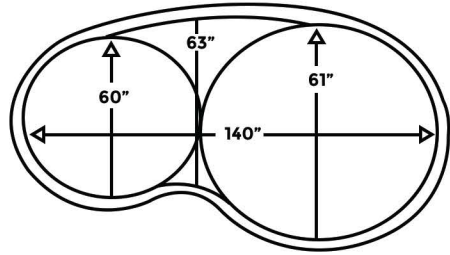
| # | SIZE | PRICE |
|------|------|-------|
| 1603 | N/A | |



NO-NICHE SKIMMER BASKET

| # | SIZE | PRICE |
|-------|------|-------|
| 1603B | N/A | |

| Viewing Tubs | | |
|--------------|---|-------|
| # | Description | Price |
| 3701 | Measurement Tub - 39"x18"x12" | |
| 3701C | Measurement Tub Cover | |
| 3703 | Viewing Tub - 4 lbs. 19 gal.(light duty) | |
| 3704 | Viewing Tub - 7 lbs. 23 gal.(light duty) | |
| 3705 | Viewing Tub - 9 lbs. 23 gal.(light duty) | |
| 3706 | Viewing Tub - 15 lbs. 55 gal.(light duty) | |



| Preformed Koi Pond | | |
|--------------------|---|-------|
| # | Description | PRICE |
| 3801 | Preformed Koi Pond - 1500 gal (includes bottom drain, 2 venturi jets and no-niche skimmer) | |

