



W. LIM CORPORATION

CREATING THE NEXT WAVE IN FILTRATION



2024 CATALOG
www.wlimproducts.com

ABOUT W. LIM CORPORATION

William Lim, founder of W. Lim Corporation, started the company in 1980 as a koi wholesaler. Over the course of 30 years, he grew the company into a top-tier, internationally recognized manufacturer of high-end equipment for koi ponds, swimming pools and aquaponics equipment. W. Lim Corporation is known for its trademarked highly-efficient wave and dragon series pumps, as well as its high-output UV sterilizers.

Hector Mardueño started his company, Stonewall Creek, in 2019. He researched and tested all the equipment on the market to find the tools that would withstand Las Vegas heat, handle the biohazards and loads of natural swimming pools and koi ponds, and ultimately create ponds that were pristine in both aesthetics and safety. That's when he discovered W. Lim Corporation. After using their equipment to build several successful ponds, he became one of William's big

gest and most loyal clients. Then in September 2021, Hector Mardueño acquired W. Lim Corporation.

Through the name W. Lim Corporation, Hector will continue William's legacy and share the beauty of natural swimming pools, koi ponds and backyard beaches in a way that is clean and safe for pets, friends and family.



TABLE OF CONTENTS

Wave Series Pump.....	pages 3-6
Dragon Series Pump.....	pages 7-11
Wave UV Sterilizer.....	pages 12-13
Skyhawk UV Sterilizer.....	pages 14-15
Desert Eagle UV Sterilizer.....	pages 16-17
Condor Al amalgam.....	pages 18-19
UV & Ozone Hybrid Unit.....	page 20
BioWave Series Filters.....	page 21
EZR Filter.....	page 22
Wave Vortex.....	page 23
Performance Beads Series.....	page 24
Replacement Parts.....	page 25-27

WAVE SERIES PUMPS

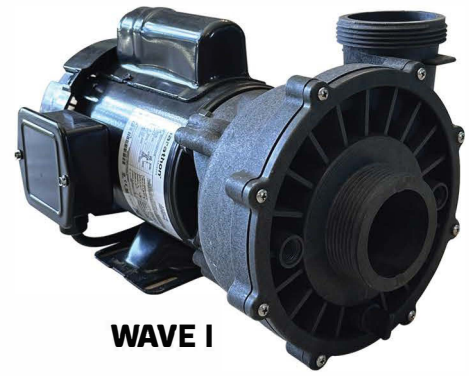
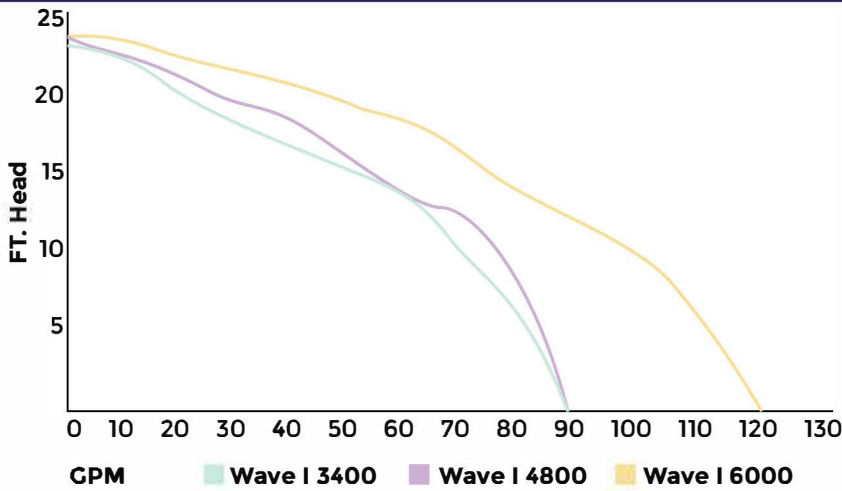
The Wave Series pumps have a high-performing, proprietary design. The impeller, motor and body are engineered to fit each motor exactly to create this signature pump. Features include emergency thermal protection shut-off, quick disconnect unions, 3-way discharge positions for less restriction, and a custom design for whisper quiet operation. Ideal for high flow/low pressure systems, these pumps are specifically engineered for pond construction.



Wave II

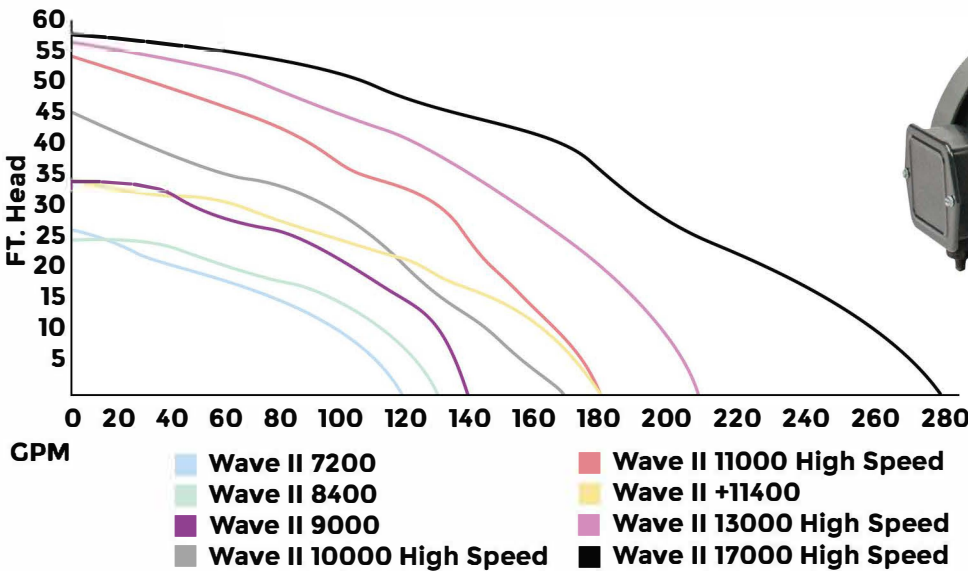


Wave I



WAVE I

#	NAME	HP	MAX HEAD	GPH	MAX RPM	WATTS	VOLTS	ENCLOSURE	DIMENSION	IN/OUT	PRICE
0509EX	WAVE I 3400	7/100	17'	3420	1725	190	115/230	TEFC	21"x13"x12"	1.5"	
0501	WAVE I 4800	1/8	24'	4800	1725	262	115/230	TEFC	21"x12"x13"	2"	
0503	WAVE I 6000	1/4	24'	6000	1725	371	115/230	TEFC	21"x13"x12"	2"	



WAVE II

#	NAME	HP	MAX HEAD	GPH	MAX RPM	WATTS	VOLTS	ENCLOSURE	DIMENSION	IN/OUT	PRICE
0504	Wave II 7200	1/4	26'	7200	1425/1725	367	115/230	TEFC	21"x13"x12"	1.5"	
0505	Wave II 8400	1/3	25'	8400	1425/1725	406	115/230	TEFC	21"x13"x13"	2"	
0506	Wave II 9000	1/2	33'	9000	1425/1725	630	115/230	TEFC	21"x13"x14"	2"	
0508EX	Wave II+ 11400	1	34'	11400	1425/1725	888	115/230	TEFC	21"x13"x15"		
0101-A	Wave II 10000 HS	1	45'	10020	3450 - 3600	1089	115/230	TEFC	21"x13"x12"		
0102-A	Wave II 11000 HS	1 1/2	54'	10980	3450 - 3600	1735	115/230	TEFC			
0103-A	Wave II 13000 HS	2	58'	13020	3450 - 3600	2288	115/230	TEFC			
0104-A	Wave II 17000 HS	3	58'	16980	3450 - 3600	2772	115/230	TEFC			



WAVE SERIES REPLACEMENT PARTS



WAVE FACEPLATE

#	SIZE	PRICE
5104-AS	1.5"	
5104	2"	



WAVE HOUSING

#	SIZE	PRICE
9142	1.5"	
5109	2"	



PUMP UNION ASSEMBLY

#	SIZE	PRICE
1105	1.5"	
1106	2"	



WAVE MASTER SEAL KIT

Includes: Price:
 Buna seal set
 O-Ring 111
 O-Ring 261



Plug Air Reliever & O-RING 111

#	SIZE	PRICE
5102	1.5"	
5102	2"	



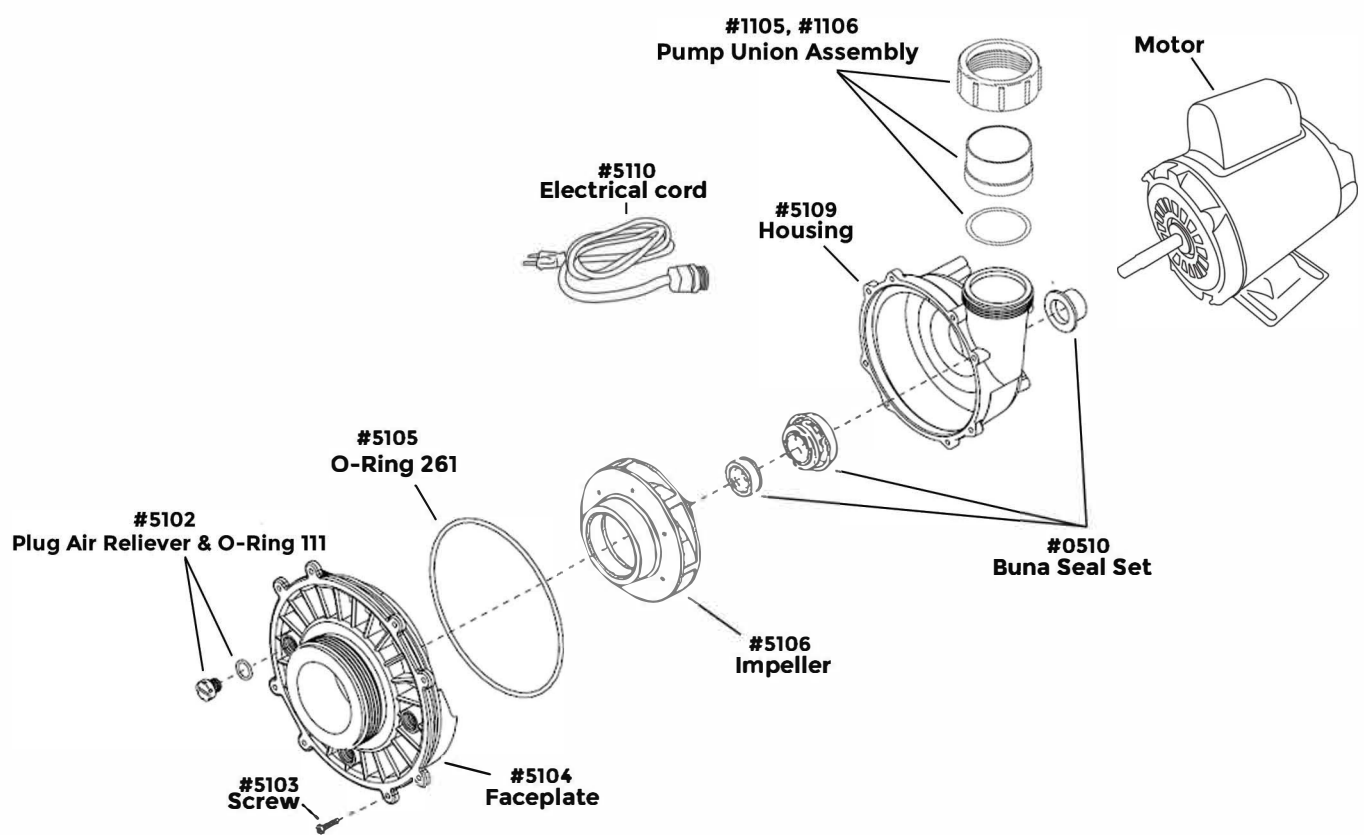
SCREW

#	SIZE	PRICE
5103	32x7/16 PPH	



ELECTRICAL CORD

#	SIZE	PRICE
5110	6"	



WAVE SERIES IMPELLERS & MOTORS

IMPELLERS FOR WAVE SERIES		
#	Description	PRICE
5106-0.125	Impeller for Wave I 4800	
5106-0.25	Impeller for Wave I 6000	
5106-0.25II	Impeller for Wave II 7200	
5106-0.33	Impeller for Wave II 8400	
5106-0.50	Impeller for Wave II 9000	
5106-1.00	Impeller for Wave II+ 11400	
5106-HS1.50	Impeller for Wave II 10000 High Speed	
5106-HS2.00	Impeller for Wave II 11000 High Speed	
5106-HS3.00	Impeller for Wave II 13000 High Speed	
5106-1.00	Impeller for Wave II 10000 High Speed	



MOTOR FOR WAVE SERIES		
#	Description	PRICE
5125-EME	Motor for Wave I 2700 Open Drip	
5125-Mar	Motor for Wave I 3400	
5111	Motor for Wave I 4800	
5113	Motor for Wave I 6000	
9062	Motor for Wave III 10800 Variable Speed	
5114	Motor for Wave II 7200	
5115	Motor for Wave II 8400	
5116	Motor for Wave II 9000	
5118	Motor for Wave II+ 11400	
5119	Motor for Wave II 10000 High Speed	
5120	Motor for Wave II 11000 High Speed	
5121	Motor for Wave II 13000 High Speed	
5122	Motor for Wave II 17000 High Speed	

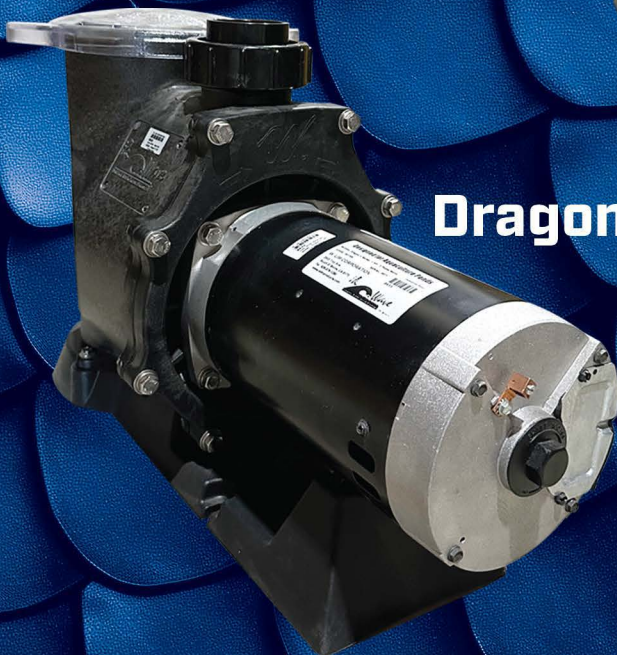
DRAGON SERIES



Dragon I

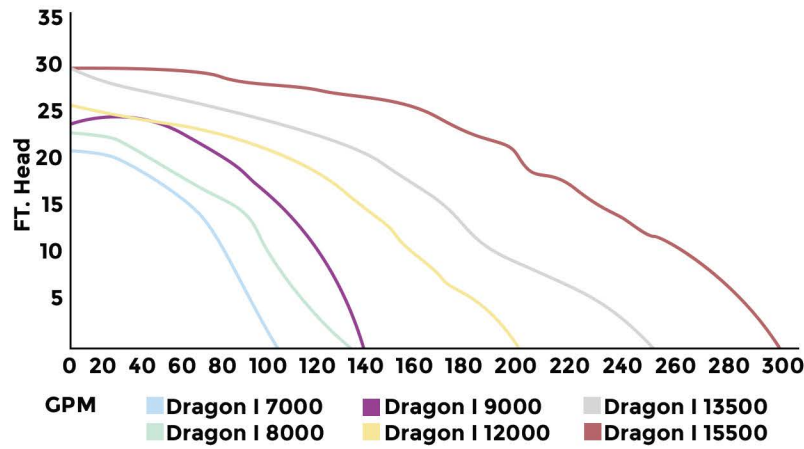


Dragon II

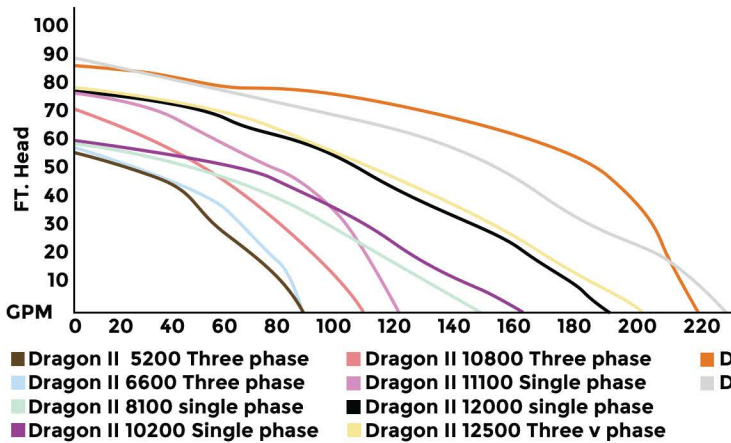


Dragon III

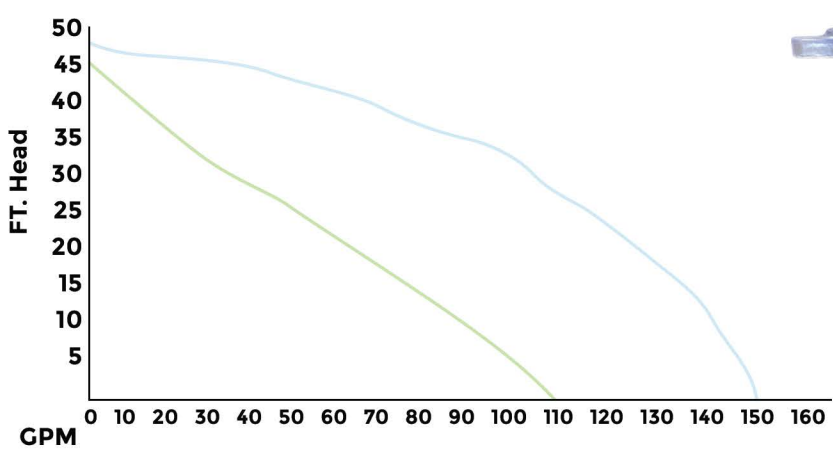
Our Dragon pumps have impellers that are specifically engineered to the body, making these pumps some of the most efficient pumps on the market. These pumps are self-priming and house true 56 from motors for cooler running and longer life. They also have built-in leaf traps making them perfect for use in pools or other high flow/low pressure projects.



#	NAME	HP	MAX HEAD	GPH	MAX RPM	WATTS	VOLTS	ENCLOSURE	DIMENSION	IN/OUT	PRICE
0302	Dragon I 7000	1/4	26'	7000	1725	320	115/230	TEFC	30"x21"x14"	2"	
0303	Dragon I 8000	1/3	28'	8000	1725	456	115/230	TEFC	30"x21"x14"	2"	
0304	Dragon I 9000	3/4	32'	9000	1725	600	115/230	TEFC	30"x21"x14"	2"	
0305	Dragon I 12000	1	35'	12000	1425/1725	993	115/230	TEFC	30"x21"x14"	2.5"	
0306	Dragon I 13500	1 1/2	39'	13500	1425/1726	1256	115/230	TEFC	30"x21"x14"	2.5"	
0307	Dragon I 15500	2	40'	15500	1425/1727	1689	115/230	TEFC	30"x21"x14"	2.5"	



#	NAME	HP	MAX HEAD	GPH	MAX RPM	WATTS	VOLTS	ENCLOSURE	DIMENSION	IN/OUT	PRICE
0601	Dragon II 8100 S.P	1/2	47'	8100	3450	312	115/230	ODP		2"	
0602	Dragon II 10200 S.P	3/4	60'	5400	3450	389	115/230	ODP	30"x21"x14"	2"	
0603	Dragon II 11100 S.P	1	72'	11100	3450		115/230	ODP		2"	
0604	Dragon II 12000 S.P	1 1/2	80'	12000	3450		115/230	ODP	30"x21"x14"	2"	
0631	Dragon II 5200 S.P	1/2	56'	5200	3450	649	208-230/460	ODP		2"	
0632	Dragon II 6000 S.P	3/4	70'	6000	3450	743	208-230/460	ODP	29"x19"x14"	2"	
0633	Dragon II 6600 S.P	1	78'	6600	3450	992	208-230/460	ODP	29"x19"x15"	2"	
0635	Dragon II 10800 S.P	2	79'	10800	3450	1350	208-230/460	ODP	29"x19"x16"	2"	
0636	Dragon II 13800 S.P	3	90'	13800	3450	1852	208-230/460	ODP	29"x19"x17"	2"	
0638	Dragon II 12500 S.P	5	95'	12500	3450	2798	208-230/460	ODP		2"	

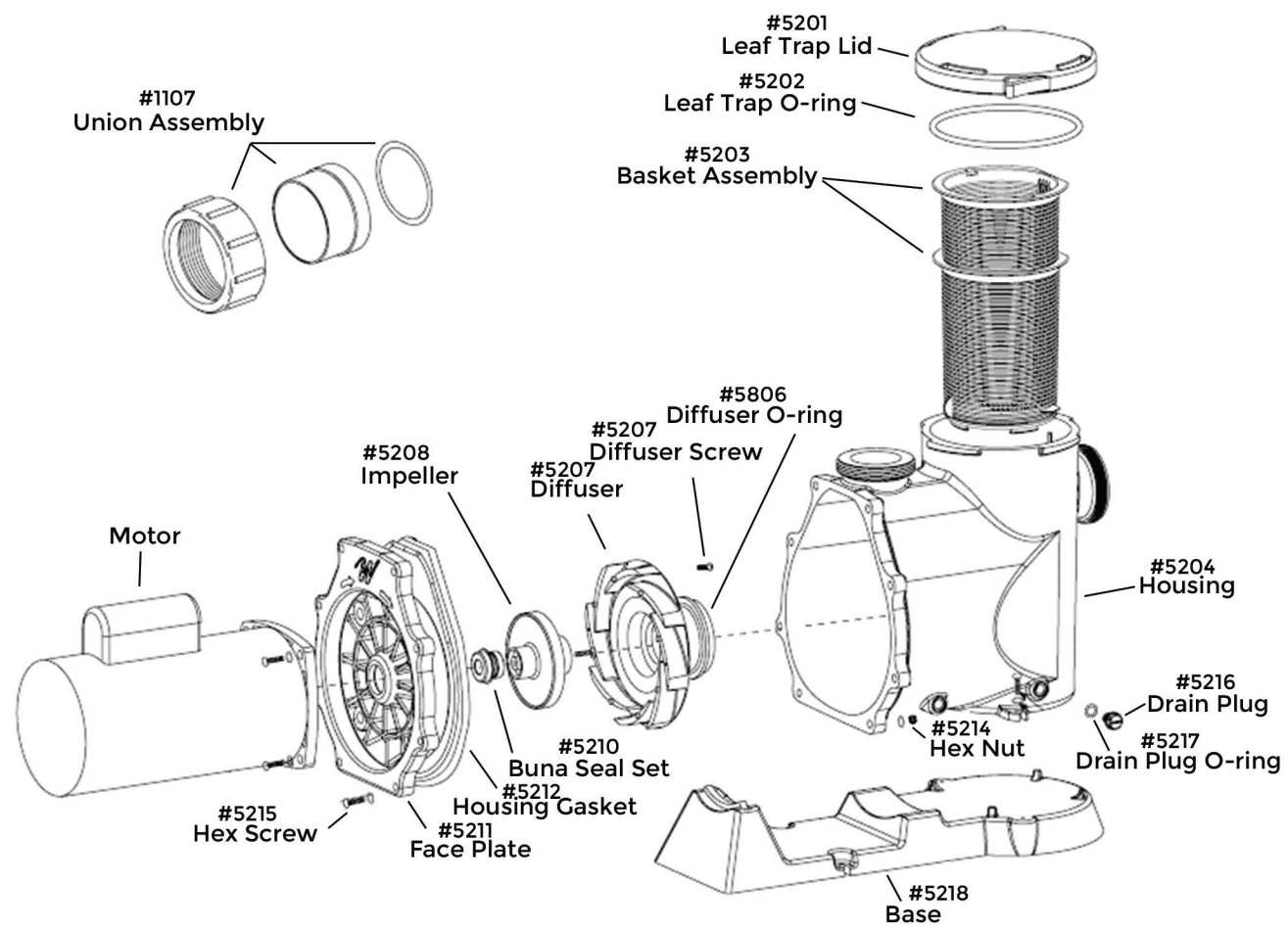


■ Dragon III 7200 Variable Speed
■ Dragon III 12000 Dual Voltage Variable Speed



Dragon III

#	NAME	HP	MAX HEAD	GPH	MAX RPM	WATTS	VOLTS	ENCLOSURE	DIMENSION	IN/OUT	PRICE
0332	Dragon III 12000 V.S	1.65	58'	12000	3450	389		TEFC	30"x21"x14"	2"	
SNL-P3020	Dragon III 2HP V.S	2			1725		230	TEFC		2"	
SNL-P3021	Dragon III 3HP V.S	3			1725		230	TEFC	30"x21"x14"	2"	



DRAGON SERIES REPLACEMENT PARTS



DRAGON FACEPLATE

#	SIZE	PRICE
5211		



DRAGON HOUSING

#	SIZE	PRICE
5204		



DRAIN PLUG & O-RING

#	Name	PRICE
5216	Drain plug	
5217	O-Ring	



DRAGON MASTER SEAL KIT

Includes: Buna seal set
Housing Gasket
Drain plug O-ring
Diffuser O-ring
Lid O-ring

Price:



PUMP UNION ASSEMBLY

#	SIZE	PRICE
1107	2"	
1108	2.5"	



HEX SCREW & NUT

#	SIZE	PRICE
5214		
5215		



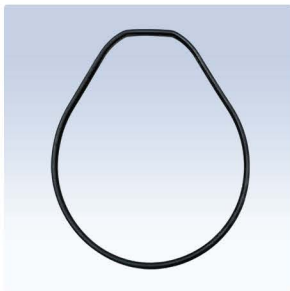
DIFFUSER

#	SIZE	PRICE
5205-L	Large	
5205-M	Medium	
5205-SS		



BASKET FOR DRAGON

#	SIZE	PRICE
5203		



HOUSING GASKET

#	SIZE	PRICE
5212		



LEAF TRAP LID W/O-RING

#	SIZE	PRICE
5201		
5202		





DRAGON SERIES IMPELLERS & MOTORS

IMPELLERS FOR WAVE SERIES		
#	Description	PRICE
5208-0.25	Impeller for Dragon I 7000	
5208-0.33	Impeller for Dragon I 8000	
5208-0.75	Impeller for Dragon I 9000	
5208-1.00	Impeller for Dragon I 12000	
5208-1.	Impeller for Dragon I 13500	
5208-2.00	Impeller for Dragon I 15500	
5228-1-0.50	Impeller for Dragon II 8100 Single Phase	
5228-1-0.75	Impeller for Dragon II 10200 Single Phase	
5228-1-1.00	Impeller for Dragon II 11100 Single Phase	
5228-1-1.5	Impeller for Dragon II 12000 Single Phase	
5228-3-0.50	Impeller for Dragon II 5200 Three Phase	
5228-3-0.75	Impeller for Dragon II 6000 Three Phase	
5228-3-1.00	Impeller for Dragon II 6600 Three Phase	
5228-3-2.00	Impeller for Dragon II 10800 Three Phase	
5228-3-3.00	Impeller for Dragon II 13800 Three Phase	
5228-3-5.00	Impeller for Dragon II 12500 Three Phase	
5208-0.25SS	Impeller for Dragon I 7000 (Stainless Steel)	
5208-0.33SS	Impeller for Dragon I 8000 (Stainless Steel)	
5208-0.75SS	Impeller for Dragon I 9000 (Stainless Steel)	
5208-1.00SS	Impeller for Dragon I 12000 (Stainless Steel)	
5208-1.50SS	Impeller for Dragon I 13500 (Stainless Steel)	



MOTOR FOR WAVE SERIES		
#	Description	PRICE
5219	Motor for Dragon I 7000	
5220	Motor for Dragon I 8000	
5221	Motor for Dragon I 9000	
5222	Motor for Dragon I 12000	
5223	Motor for Dragon I 135000	
5224	Motor for Dragon I 15500	
0601-MT	Motor for Dragon II 8100 Single Phase	
0602-MT	Motor for Dragon II 10200 Single Phase	
0603-MT	Motor for Dragon II 11100 Single Phase	
0604-MT	Motor for Dragon II 12000 Single Phase	
0631-MT	Motor for Dragon II 5200 Triple Phase	
0632-MT	Motor for Dragon II 6000 Triple Phase	
0633-MT	Motor for Dragon II 6600 Triple Phase	
0635-MT	Motor for Dragon II 10800 Triple Phase	
0636-MT	Motor for Dragon II 13800 Triple Phase	
0638-MT	Motor for Dragon II 12500 Triple Phase	
9061	Motor for Dragon III 7200 Variable Speed	
9666W	Motor for Dragon III 12000 Variable Speed	
SNL-3020	Motor for Dragon III 2HP Variable Speed	
9060EZ	Motor for Dragon III 3 HP Variable Speed	

WAVE UV STERILIZER

The Wave UV Sterilizer ensures efficient sterilization by producing high intensity Light that will help reduce and control pond algae and harmful living pathogens. Each Wave UV is equipped with a viewing port for easy indication of lamp operation and can be customized in number of lamps. The T5 style quartz lamp runs continuously for up to 9,000 hours before reaching the end of its useful life. these clarifiers are ideal for residential use and feature inlets and outlets capable of rotation to ensure a perfect fit everytime.





#	NAME	LAMPS	WATTS	H/O?	GPH	REC. POND SIZE	DIMENSION	SCH	IN/OUT	PRICE
3256	Wave UV 14.8	1	14.8	NO				40	2"	
3251	Wave UV 25	1	25	NO	3600	1500 gal.		40	2"	
3252	Wave UV 40	1	40	NO	4080	2000 gal.		40	2"	
3253	Wave UV 80	2	80	NO	5400	4000 gal.		40	2"	
3254	Wave UV 120	3	120	NO	6600	6000 gal.		40	2"	
3255	Wave UV 160	4	160	NO	7200	10000 gal.		40	2"	
3232-1	Wave UV 58	1	58	YES	3600	3500 gal.		40	2"	
3232-2	Wave UV 116	2	116	YES	6960	7000 gal		40	2"	
3230	Wave UV 66	1	66	NO				40	2"	

WAVE UV STERILIZER REPLACEMENT PARTS



Ballast

#	WATTS	PRICE
3263-25	25W	
3263-40	40W	
3234-58	58W	
3234-116	116W	



Lamps

#	WATTS	PRICE
3261-14.8	14.8W	
3261-25	25W	
3261-40	40W	
3232	58W H/O	



Quartz Sleeve

#	WATTS	PRICE
3262-25	25W	
3262-40	40W	
3233	58W	
6506-10.6CL	66W	



Power Supply

#	WATTS	PRICE
3246	25W	
3247	40W	
3245	58W	
3507	66W	

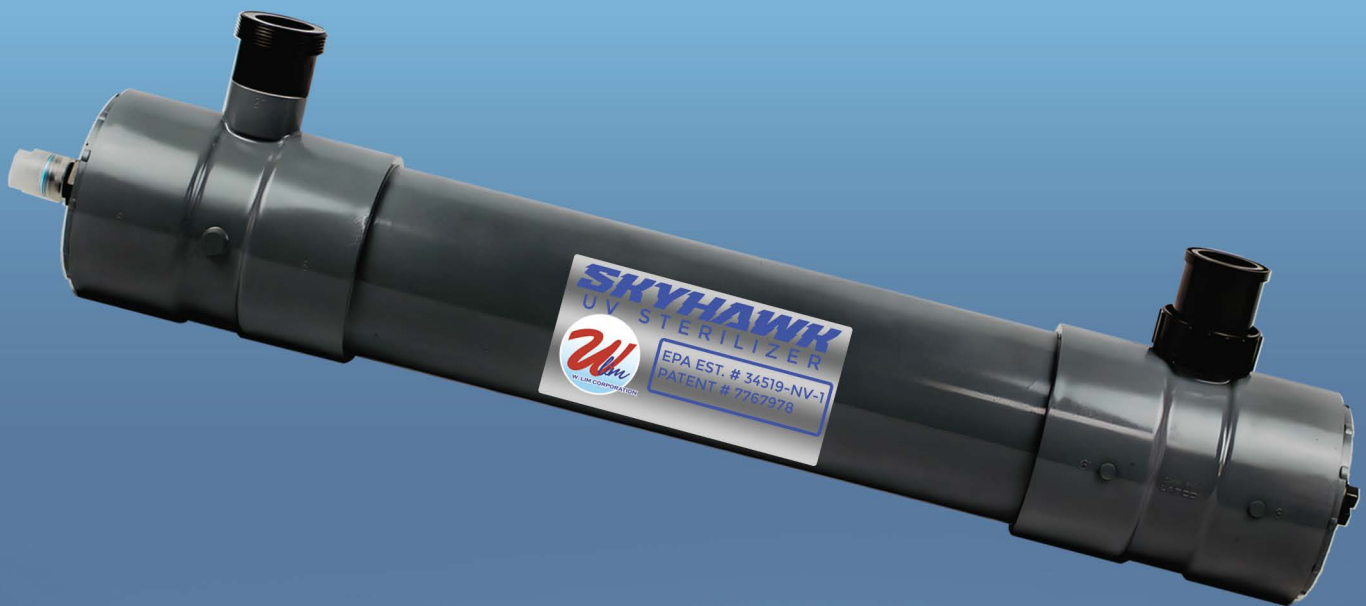


Pristine clear water is made possible by Wlim Corporation's UV Sterilizer unit

Design and built by Stonewall Creek

SKYHAWK UV STERILIZER SERIES

If you're looking for a highly customizable high-output sterilization for your project, the Skyhawks are the series for you. These contractor-grade UV units provide high contact time, high killing power, and can be built to whatever size you need.





#	NAME	LAMPS	WATTS	H/O?	GPH	DIMENSION	SCH	IN/OUT	PRICE
7105	Model 5	1	36	YES	3240	6" Chamber	40	2"	
7115	Model 5	2	72	YES		6" Chamber	40	2"	
7116	Model 5	3	108	YES		6" Chamber	40	2"	
7109	Model 5	4	144	YES		6" Chamber	40	2"	
7106	Model 10.3	1	58	YES	4980	6" Chamber	40	2"	
7106-2	Model 10.3	2	116	YES		6" Chamber	40	2"	
7113	Model 10.6	1	66	YES	4980	6" Chamber	40	2"	
7112	Model 10.6	2	132	YES		6" Chamber	40	2"	
7107	Model 20	1	86	YES	7080	6" Chamber	40	2"	
7108	Model 40	1	119	YES	10320	6" Chamber	40	2"	

SKYHAWK REPLACEMENT PART



Quartz Sleeve

#	WATTS	PRICE
3506-05	36W	
3506-10	58W	
3506-10.3CL	66W	
3506-20	86W	
3506-40	119W	



Lamps

#	WATTS	PRICE
6505-05C	36W	
6505-10C	58W	
6505-10.3CL	66W	
6505-20CL	86W	
6505-40CL	119W	



Ballast

#	WATTS	PRICE
3507-05	36W	
3507-10	58W	
3507-10.3	66W	
3507-20	86W	
3507-40	119W	



Power Supply

#	WATTS	PRICE
7301	36W	
7303	108W(3Lamps)	
7304	144W(4Lamps)	
7306	66W	
7310	86W	
7314	119W	



Pristine clear water is made possible by Wlim Corporation's UV Sterilizer unit

Design and built by Stonewall Creek

DESERT EAGLE

U V S T E R I L I Z E R

Our high-output industrial-grade sterilizer have a high interior and exterior UV resistance and are able to support high wattage and high sun-exposure. These UVs feature strong schedule 80 bodies and can be custom ordered to accomodate 2", 3" ,4" or 6" inlet and outlets.





#	NAME	LAMPS	WATTS	H/O?	MAXFLOW(GPH)	DIMENSION	SCH	PRICE
3502-66	Model 610.6	1	66	YES	4980		80	
3502-132	Model 610.6	2	132	YES			80	
3502-198	Model 610.6	3	198	YES			80	
3502-264	Model 610.6	4	264	YES			80	
3503-86	Model 620	1	86	YES	7080		80	
3503-172	Model 620	2	172	YES			80	
3503-258	Model 620	3	258	YES			80	
3503-344	Model 620	4	344	YES			80	
3504-119	Model 640	1	119	YES	10320		80	
3504-238	Model 640	2	238	YES			80	
3504-357	Model 640	3	357	YES			80	
3504-476	Model 640	4	476	YES			80	

DESERT EAGLE REPLACEMENT PART



Quartz Sleeve

#	WATTS	PRICE
3506-20Q	66W	
3506-20Q	86W	
3506-40Q	119W	



Ballast

#	WATTS	PRICE
3507-20B	66W	
3507-20B	86W	
3507-40B	119W	



Lamps

#	WATTS	PRICE
3505-20L	66W H/O	
3505-20L	86W H/O	
3505-40L	119 H/O	



Power Supply


#	WATTS	PRICE
3507-20-P1	66W	
3507-20-P1	86W	
3507-20-P3	258W(3Lamps)	
3507-20-P4	344W(4Lamps)	
3507-40-P1	119W	
3507-40-P3	357W(3Lamps)	
3507-40-P4	476W(4Lamps)	



Pristine clear water is made possible by Wlim Corporation's UV Sterilizer unit

Design and built by Stonewall Creek

CONDOR AMALGAM



The Condor amalgam UVs utilize the highest output lamp rated at 600,000 micro watts, yielding high-grade sanitation perfect for residential pools and commercial and industrial applications. These UVs utilize fewer, high-output lamps to produce higher UV output and can be custom built to accommodate 2"-24" bodies and inlets/outlets. With a useful life of 12,000 hours and transmittance loss of only 50,000 microwatts/cm, it's no wonder our units can be found in natural pools, aquaculture, hatcheries, and water treatment plants across the country! Call for custom sizes and pricing.



CONDOR AMALGAM SERIES

#	NAME	LAMPS	WATTS	H/O?	MAXFLOW(GPH)	DIMENSION	SCH	PRICE
3271	Condor 168-6"	1	168	YES		6" Chamber	80	
3272	Condor 336-6"	2	336	YES		6" Chamber	80	
3273	Condor 504-6"	3	504	YES		6" Chamber	80	
3274	Condor 672-6"	4	672	YES		6" Chamber	80	
3201	Condor 200-6"	1	200	YES		6" Chamber	80	
3202	Condor 400-6"	2	400	YES	1800	6" Chamber	80	
3203	Condor 600-6"	3	600	YES	3000	6" Chamber	80	
3204	Condor 800-6"	4	800	YES	3000	6" Chamber	80	
3211	Condor 300-6"	1	300	YES	12000	6" Chamber	80	
3212	Condor 600-6"	2	600	YES	12000	6" Chamber	80	
3213	Condor 900-6"	3	900	YES	12000	6" Chamber	80	
3214	Condor 1200-6"	4	1200	YES	7500	6" Chamber	80	

CONDOR AMALGAM REPLACEMENT PART



Quartz Sleeve

#	WATTS	PRICE
3205	168W	
3208	200W	
3210	300W	



Lamps

#	WATTS	PRICE
168WA	168W	
3206	200W	
3209	300W	
	375W	



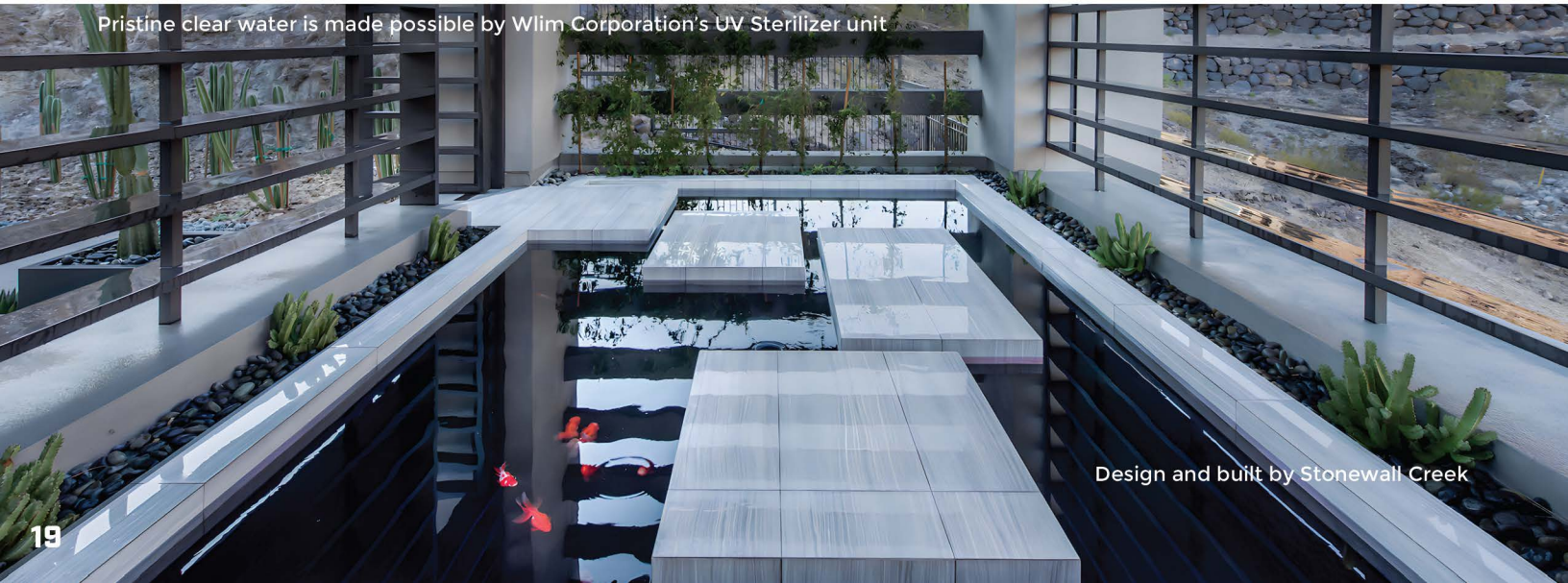
Ballast

#	WATTS	PRICE
3207	168W	
	200W	
	300W	
	375W	



Power Supply

#	WATTS	PRICE
3271-P	168W(1Lamp)	
3272-P	336W(2Lamps)	
3273-P	504W(3Lamps)	
3274-P	672W(4Lamps)	
3261-1	200W-300(Lamp)	
3261-2	400W-600(2Lamps)	
3261-3	600W-900(3Lamps)	
3261-4	800W-1200(4Lamps)	



Pristine clear water is made possible by Wlim Corporation's UV Sterilizer unit

Design and built by Stonewall Creek

INTRODUCING THE UV AND OZONE HYBRID



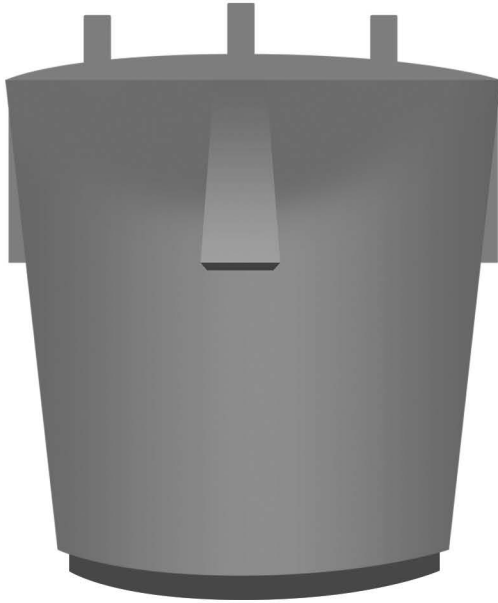
BIOWAVE FILTER SERIES



For ponds and pools with organic matter, our BioWave filters are high quality, energy efficient and high performing filters that contain larger media, allowing for more flow while still providing quality biological filtration. They are designed to preserve the delicate useful bacteria during backwash and to provide a large surface area for the bacteria to live and flourish. The BioWaves utilize a backwashing technique using a blower system that agitates the water to produce “tumbling” during backwash. The blower pushes air into the filter causing the media to mix and tumble. This results in cleaning bioflocks that are attached to each piece while preserving beneficial bacteria within the filter. Great for general filtering purposes.

#	NAME	GPH	REC. POND SIZE	MEDIA VOLUME	WATER VOLUME	IN/OUT	PRICE
2401	BioWave Plus Filter 36	3000	6000 gal.	2.5 ft ³	36 ft ³	2"	
2402	BioWave Plus Filter 48	6180	8000 gal.	3.5 ft ³	48 ft ³	2"	
2403	BioWave Plus Filter 60	6960	10000 gal.	4.5 ft ³	60 ft ³	2"	

EZR FILTER



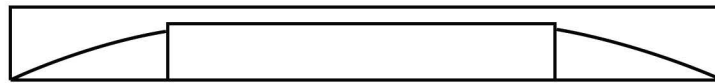
Our EZR filter provides layered sand and gravel filtering as close to natural filtering processes as possible while requiring less maintenance than other filtering devices. Upflowing through different levels of natural media mechanically traps and breaks down debris and performs biological filtering while offering unmatched polishing capabilities. This filter features a blower for extremely easy backwashing and preformed flat spots for optional bulkheads.

EZR BIOLOGICAL FILTER

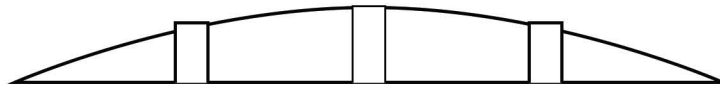
Product #: 3002

Size: 5000 gal.

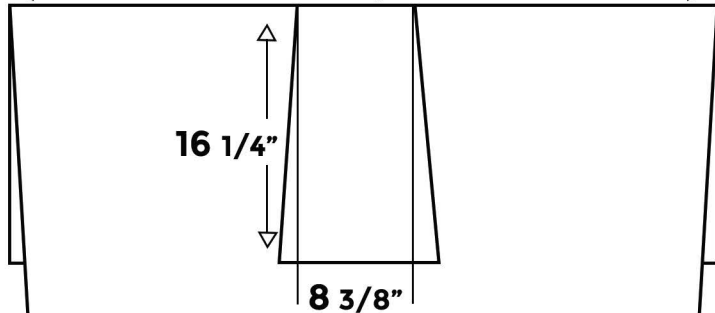
Price:



57 5/8"



53 1/2"



Silica Sand

Pea Gravel

Large Gravel

49 1/2"

47 1/2"

45 1/2"

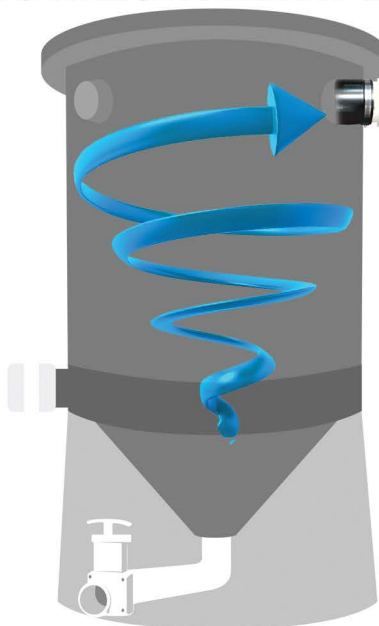


WAVE VORTEX SERIES

Our signature Wave Series filters feature three unique filtration devices. The **Wave Bio-Reactor** Settlement Tank contain floating media that provides biofiltration. The **Vortex Filter** uses a vortex bottom for mechanical filtering with space above it for biological filtering. The **Vortex Settlement Tank** provides excellent mechanical filtering by settling solids to the bottom of the vortex shaped bottom. At recommended flow rates, it is possible to remove almost all of the suspended solids. All Wave Series filter devices feature three outlet ports that allow for any configuration and dome-shaped lids that prevents rain, leaves, and other matter from accumulating on top. With an industrial strength body made of poly UV resistant material, these filters will not deteriorate under long-term sun exposure.

#	NAME	REC. POND SIZE	MEDIA VOLUME	WATER VOLUME	IN/OUT	PRICE
2501	Wave 24 Vortex filter	1000 gal	4 ft ³	24 ft ³	3"	
2502	Wave 24 Vortex Settlement tank	1000 gal		24 ft ³	3"	
2505	Wave 24 Bioreactor Settlement tank	1000 gal		24 ft ³	3"	
2701	Wave 36 Vortex Filter	5000 gal	10 ft ³	36 ft ³	4"	
2702	Wave 36 Vortex Settlement tank	5000 gal		36 ft ³	4"	
2705	Wave 36 Bioreactor Settle tank	5000 gal		36 ft ³	4"	
2704	Wave 48 Vortex Filter	15000 gal			4"	
2706	Wave 48 Vortex Settlement tank	15000 gal			4"	
2707	Wave 48 Bioreactor Settlement tank	15000 gal			4"	

VORTEX SETTLEMENT TANK



VORTEX FILTER



BIO-REACTOR



For the highest level of clarity and filtration, our bio-reactor, vortex filter, and vortex settlement tank can be combined into a top-tier multifilter system.

PERFORMANCE BEAD SERIES FILTER



Our performance bead filters are engineered to function with low pressure, helping with energy efficiency. The fine, sinking media allows mechanical and biological filtration and expert-level polishing. The rinse cycle feature prerinses floating media after backwashing and discharges the rinsed water into a waste line. This filter also features a bottom sludge drain which allows heavy settlement to discharge from the bottom without disturbing the media. Finally, a filter bypass allows complete isolation of the filter media from your pond without disturbing normal water flow.

#	NAME	GPH	REC. POND SIZE	MEDIA VOLUME	WATER VOLUME	IN/OUT	PRICE
2321	Performance Bead Filter 36	3000	2500-5000 gal.	2.5 ft ³	36 ft ³	2"	
2322	Performance Bead Filter 36	3900	5000-8000 gal.	3.5 ft ³	48 ft ³	2"	
2323	Performance Bead Filter 36	4500	8500-10000 gal.	4.5 ft ³	60 ft ³	2"	



REPLACEMENT PARTS



CLEAR SPA AIR VALVE

#	SIZE	PRICE
1414	2"	



LEAF TRAP BASKET

#	SIZE	PRICE
1101	1.5"	
1102	2"	



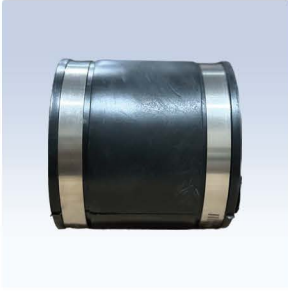
BASKET FOR DRAGON

#	SIZE	PRICE
3005	1 hp	
3006	2 hp	



PUMP UNION MALE ADAPTOR

#	SIZE	PRICE
1109	1.5"	
1110	2"	



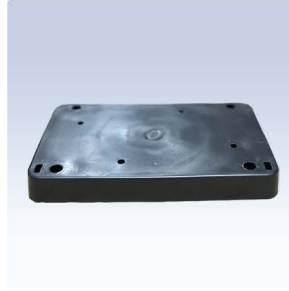
RUBBER COUPLINGS

#	SIZE	PRICE
1112	3"	
1113	4"	



PUMP BASE (LARGE)

#	SIZE	PRICE
1001	15.25"x8.25"x1"	



PUMP BASE

#	SIZE	PRICE
1002	6.5"x3.75"x3/4"	



LEAF TRAP

#	SIZE	PRICE
1101	1.5"	
1102	2"	



LEAF TRAP LID

#	SIZE	PRICE
1095	1.5"	
	2"	



LEAF TRAP O-RING

#	SIZE	PRICE
1099	2"	



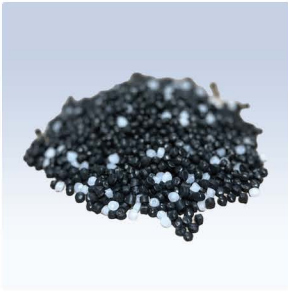
AIR BLOWER

#	SIZE	PRICE
3005	1 hp	
3006	2hp	



FLOATING MEDIA

#	SIZE	PRICE
4902		



PERFORMANCE BEADS

#	SIZE	PRICE
1095	1.5"	
	2"	



FILTER MAT

#	SIZE	PRICE
3106	24"(Round)	



BASKET VALVE SCREEN

#	SIZE	PRICE
1206	1.5"	
1207	2"	
1208	3"	



UNIONS

#	SIZE	PRICE
1223	1"-FC	
1223W	1"-WW	
1224	1.5"-FC	
1224W	1.5"-WW	
1225	2"-FC	
1225W	2"-WW	
1226	3"-FC	

FC = FloControl
WW = WaterWay



BULKHEAD FITTINGS

#	SIZE	PRICE
1209	1/2"	
1210	3/4"	
1211	1"	
1212	1.5"	
1213	2"	
1214	3"	
1215	4"	



PVC BULKHEAD FITTINGS

#	SIZE	PRICE
1216	3/4"(T)	
1217	1"(T)	
1218	1"(S)	
1219	1.5"(T)	
1220	1.5"(S)	
1221	2"(T)	
1222	2"(S)	



PVC FLEXIBLE PIPES

#	SIZE	PRICE
1310	1/2"	
1311	3/4"	
1312	1"	
1313	1.5"	
1314	2"	
1315	3"	
1316	4"	



POND JET

#	SIZE	PRICE
1304	3/4"	
1305	1.5"	
7080	Jet	



PVC SWING CHECK VALVE

#	SIZE	PRICE
1401	1"(S)	
1402	1.5"(S)	
1403	2"(S)	
1404	3"(S)	
1405	4"(S)	



PVC SWING CHECK VALVE(CLEAR)

#	SIZE	PRICE
1406	1.5"	
1407	2"	
1408	3"	
1409	4"	



TRUE UNION SWING CHECK VALVE

#	SIZE	PRICE
1410	1.5"(S)	
1411	2"(S)	



TRUE UNION SWING CHECK VALVE

#	SIZE	PRICE
1412	1.5"(T)	
1413	2"(T)	



KNIFE VALVE

#	SIZE	PRICE
1504	1.5"	
1505	2"	
1506	3"	
1507	4"	
1505S	2"SSP	
1506S	3"SSP	
1507S	4"SSP	
1508S	6"SSP	
1509S	8"SSP	
1510S	10"SSP	
1511S	12"SSP	



3-WAY VALVE

#	SIZE	PRICE
1502	1.5"x2"	
1503	2"x2.5"	



PVC SINGLE ENTRY BALL VALVES

#	SIZE	PRICE
1531	1.5"	
1532	2"	
1533	3"	
1534	4"	



PVC BALL VALVE

#	SIZE	PRICE
1511	1"	
1512	1.5"	
1513	2"	

S = Slip
T = Threaded
SSP = Stainless Steel Paddle



PVC BALL VALVES

#	SIZE	PRICE
1521	1/2"	
1522	3/4"	
1523	1"	
1524	1.5"	
1525	2"	



BALL VALVES(w/EPDM SEAL)

#	SIZE	PRICE
1541	1.5"	
1542	2"	
1543	3"	
1544	4"	



NO-NICHE SKIMMER

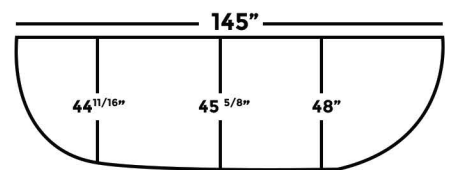
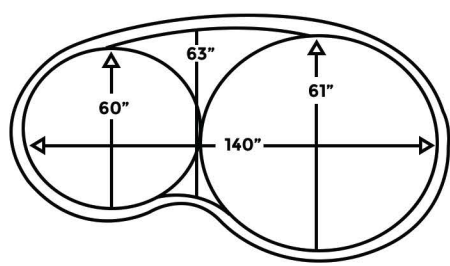
#	SIZE	PRICE
1603	N/A	



NO-NICHE SKIMMER BASKET

#	SIZE	PRICE
1603B	N/A	

Viewing Tubs		
#	Description	Price
3701	Measurement Tub - 39"x18"x12"	
3701C	Measurement Tub Cover	
3703	Viewing Tub - 4 lbs. 19 gal.(light duty)	
3704	Viewing Tub - 7 lbs. 23 gal.(light duty)	
3705	Viewing Tub - 9 lbs. 23 gal.(light duty)	
3706	Viewing Tub - 15 lbs. 55 gal.(light duty)	



Preformed Koi Pond		
#	Description	PRICE
3801	Preformed Koi Pond - 1500 gal (includes bottom drain, 2 venturi jets and no-niche skimmer)	

