



W. LIM CORPORATION

CREATING THE NEXT WAVE IN FILTRATION

2023 Catalog

www.wlimproducts.com

Table of Contents

About W. Lim.....	3
Pumps	
Wave Series.....	4-5
Dragon Series.....	6-7
Replacement Parts.....	7-9
UV Lights	
Wave Series.....	10
Sky Hawk Series.....	11
Desert Eagle Series.....	12
Condor Series.....	13-14
Filters	
Wave Series.....	15-16
BioWave Series.....	17
EZR Series.....	17
Performance Bead Series.....	18
Other Items	
Plumbing.....	19-21
Miscellaneous.....	21-23

About W. Lim Corporation

William Lim, founder of W. Lim Corp, started his company in 1980 as a koi wholesaler. Over the course of 30 years, he grew the company into a top-tier, internationally-recognized manufacturer of high-end koi pond, swimming pool, and aquaponics equipment. W. Lim Corp is known for their trademarked and super-efficient Wave and Dragon series pumps to their patented high-output UV sterilizers.

Hector Mardueño started his company, Stonewall Creek, in 2018. He researched and tested all the equipment on the market to find the tools that would withstand Las Vegas heat, handle the biohazard loads of natural swim pools and koi ponds, and ultimately create ponds that were pristine in both color and safety. That's when he discovered W. Lim Corp. After using their equipment to build several successful ponds, he became one of William's biggest and most loyal customers. Then in September of 2021, after 3 months of negotiations, Hector Mardueno acquired W. Lim Corporation.

Through the name W. Lim Corporation, Hector will continue William's legacy and share the beauty of natural swimming pools, koi ponds, and backyard beaches in a way that is clean and safe for pets, friends, and family.



W. Lim Corp sanitation and filtration system

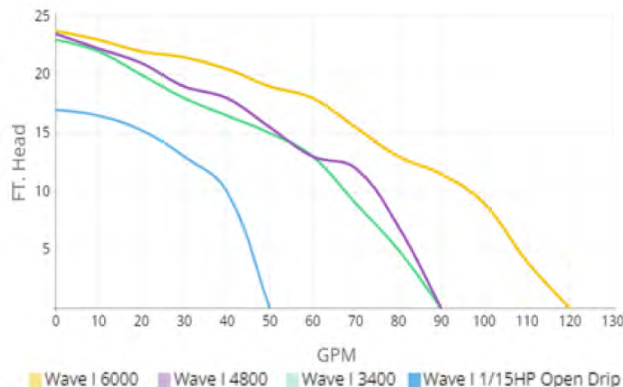


West wing of W. Lim Corp warehouse in Las Vegas, NV

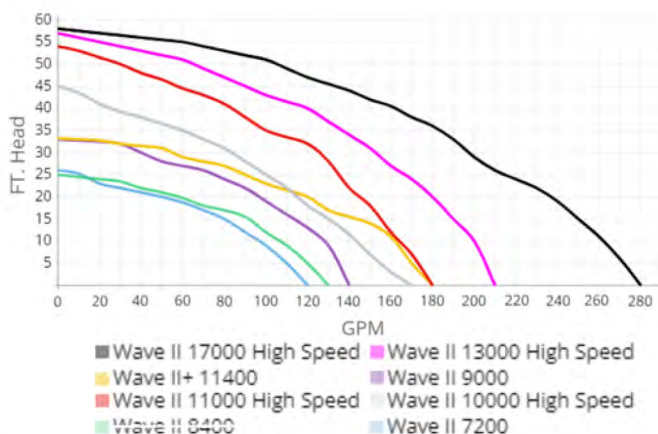
Wave Series Pumps

The Wave Series pumps have a high-performing, proprietary design. The impeller, moto and body are engineered to fit each motor exactly to create this signature pump. Features include emergency thermal protection shut-off, quick disconnect unions, 3-way discharge positions for less restriction, and a custom design for whisper quiet operation. Ideal for high flow/low pressure systems, these pumps are specifically engineered for pond construction.

Waves I



#	NAME	HP	MAX HEAD	GPH	MAX RPM	WATTS	VOLTS	ENCLOSURE	DIMENSIONS	IN/OUT	PRICE
0509	Wave I 2700 Open Drip	0.07	15'	2760	1725	160	115/230	ODP	20"x10"x10"	1.5"	
0509EX	Wave I 3400	0.07	17'	3420	1725	190	115/230	TEFC	21"x13"x12"	1.5"	
0501	Wave I 4800	0.125	24'	4800	1725	262	115/230	TEFC	21"x12"x13"	2"	
0503	Wave I 6000	0.25	24'	6000	1725	371	115/230	TEFC	21"x13"x12"	2"	



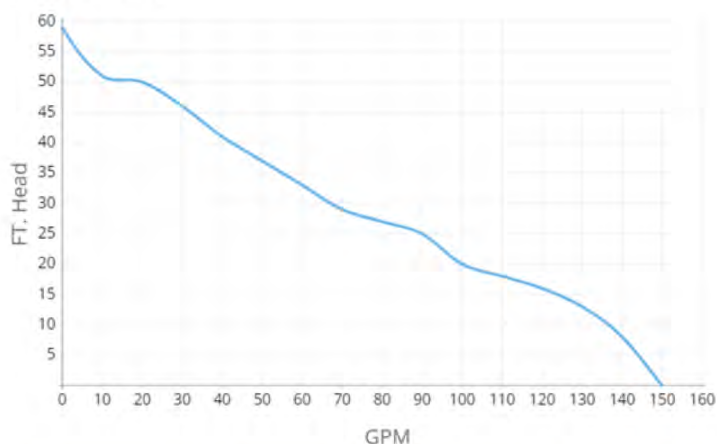
Wave II



#	NAME	HP	MAX HEAD	GPH	MAX RPM	WATTS	VOLTS	ENCLOSURE	DIMENSIONS	IN/OUT	PRICE
0504	Wave II 7200	0.25	26'	7200	1425/1725	367	115/230	TEFC	21"x13"x12"	2"	
0505	Wave II 8400	0.33	25'	8400	1425/1725	406	115/230	TEFC	21"x13"x13"	2"	
0506	Wave II 9000	0.5	33'	9000	1425/1725	630	115/230	TEFC	21"x13"x14"	2"	
0508EX	Wave II+ 11400	1	34'	11400	1425/1725	888	115/230	TEFC	21"x13"x15"	2"	
0101-A	Wave II 10000 High Speed	1	45'	10020	3450 - 3600	1089	115/230	TEFC	21"x13"x12"	2"	
0102-A	Wave II 11000 High Speed	1.5	54'	10980	3450 - 3600	1735	115/230	TEFC		2"	
0103-A	Wave II 13000 High Speed	2	58'	13020	3450 - 3600	2288	115/230	TEFC		2"	
0104-A	Wave II 17000 High Speed	3	58'	16980	3450 - 3600	2772	115/230	TEFC		2"	

All prices subject to change without notice due to fluctuating market.

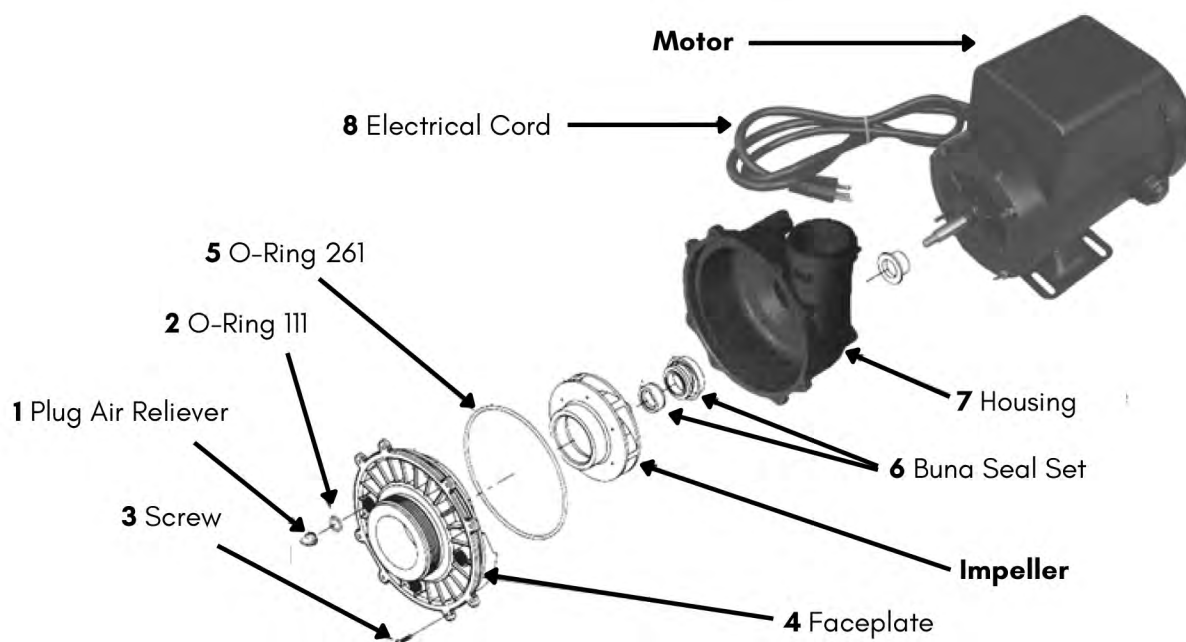
Wave III



#	NAME	HP	MAX HEAD	GPH	MAX RPM	WATTS	VOLTS	ENCLOSURE	DIMENSIONS	IN/OUT	PRICE
0531	Wave III 10800 Variable Speed	0.85	60'	10800	3450	600	115	TEFC	21"x13"x13"	2"	

Replacement Parts

Part	#	DESCRIPTION	PRICE	Part	#	DESCRIPTION	PRICE
1	5101	Plug Air Reliever		7	9142	Wave Housing - 1.5"	
2	5102	O-Ring 111 (also sold in Wave Master Seal Kit)			5109	Wave Housing - 2"	
3	5103	Screw - 32x7/16 PPH (set of 2)		8	5110	Electrical Cord - 6'	
4	5104-AS	Wave Faceplate - 1.5"		-	7050	Wave Master Seal Kit (parts 2, 5, 6)	
	5104	Wave Faceplate - 2"		-	1105	Pump Union Assembly 1.5" for Wave 1/15hp	
5		O-Ring 261 (only sold in Wave Master Seal Kit)		-	1106	Pump Union Assembly 2" for Wave I & II	
6		Buna Seal Set (only sold in Wave Master Seal Kit)		-	3242	Pump Union O-Ring	

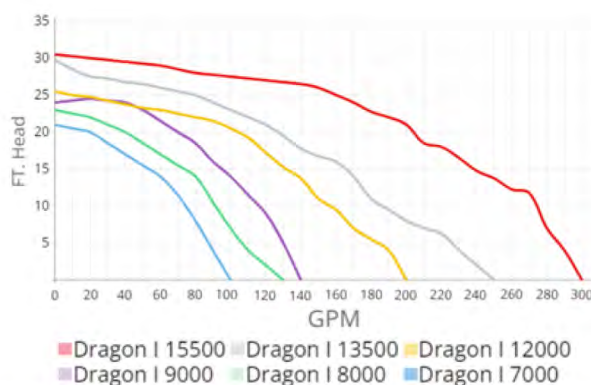


All prices subject to change without notice due to fluctuating market.

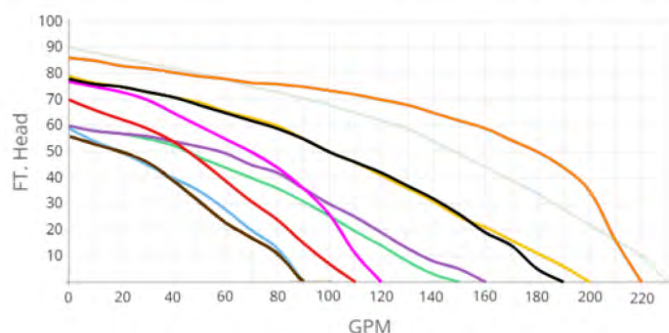
Dragon Series Pumps

Our Dragon pumps have impellers that are specifically engineered to the body, making these pumps some of the most efficient pumps on the market. These pumps are self-priming and house true 56 frame motors for cooler running and longer life. They also have built-in leaf traps making them perfect for use in pools or other high flow/low pressure projects.

Dragon I



#	NAME	HP	MAX HEAD	GPH	MAX RPM	WATTS	VOLTS	ENCLOSURE	DIMENSIONS	IN/OUT	PRICE
0302	Dragon I 7000	0.25	26'	7000	1725	320	115/230	TEFC	30"x21"x14"	2"	
0303	Dragon I 8000	0.33	28'	8000	1725	456	115/230	TEFC	30"x21"x14"	2"	
0304	Dragon I 9000	0.75	32'	9000	1725	600	115/230	TEFC	30"x21"x14"	2"	
0305	Dragon I 12000	1	35'	12000	1425/1725	993	115/230	TEFC	30"x21"x14"	2.5"	
0306	Dragon I 13500	1.5	39'	13500	1425/1726	1256	115/230	TEFC	30"x21"x14"	2.5"	
0307	Dragon I 15500	2	40'	15500	1425/1727	1689	115/230	TEFC	30"x21"x14"	2.5"	



Legend for Dragon II pumps:

- Dragon II 12500 Three Phase
- Dragon II 15900 Three Phase
- Dragon II 13500 Three Phase
- Dragon II 6600 Three Phase
- Dragon II 10800 Three Phase
- Dragon II 5200 Three Phase
- Dragon II 12000 Single Phase
- Dragon II 11100 Single Phase
- Dragon II 10200 Single Phase
- Dragon II 8100 Single Phase

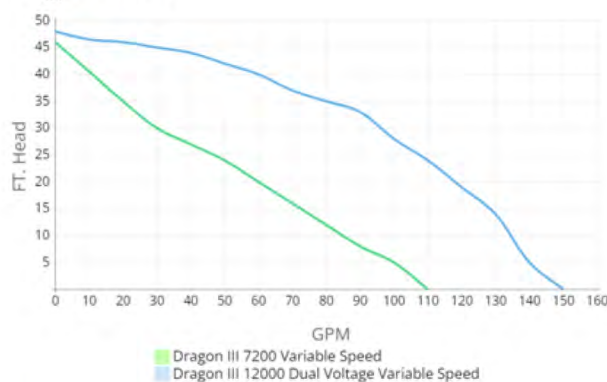
#	NAME	HP	MAX HEAD	GPH	MAX RPM	WATTS	VOLTS	ENCLOSURE	DIMENSIONS	IN/OUT	PRICE
0601	Dragon II 8100 Single Phase	0.5	47'	8100	3450	312	115/230	ODP		2"	
0602	Dragon II 10200 Single Phase	0.75	60'	5400	3450	389	115/230	ODP	30"x21"x14"	2"	
0603	Dragon II 11100 Single Phase	1	72'	11100	3450		115/230	ODP		2"	
0604	Dragon II 12000 Single Phase	1.5	80'	12000	3450		115/230	ODP	30"x21"x14"	2"	
0631	Dragon II 5200 Three Phase	0.5	56'	5200	3450	649	208-230/460	ODP		2"	
0632	Dragon II 6000 Three Phase	0.75	70'	6000	3450	743	208-230/460	ODP	29"x19"x14"	2"	
0633	Dragon II 6600 Three Phase	1	78'	6600	3450	992	208-230/460	ODP	29"x19"x15"	2"	
0635	Dragon II 10800 Three Phase	2	79'	10800	3450	1350	208-230/460	ODP	29"x19"x16"	2"	
0636	Dragon II 13800 Three Phase	3	90'	13800	3450	1852	208-230/460	ODP	29"x19"x17"	2"	
0638	Dragon II 12500 Three Phase	5	95'	12500	3450	2798	208-230/460	ODP		2"	

Dragon II



All prices subject to change without notice due to fluctuating market.

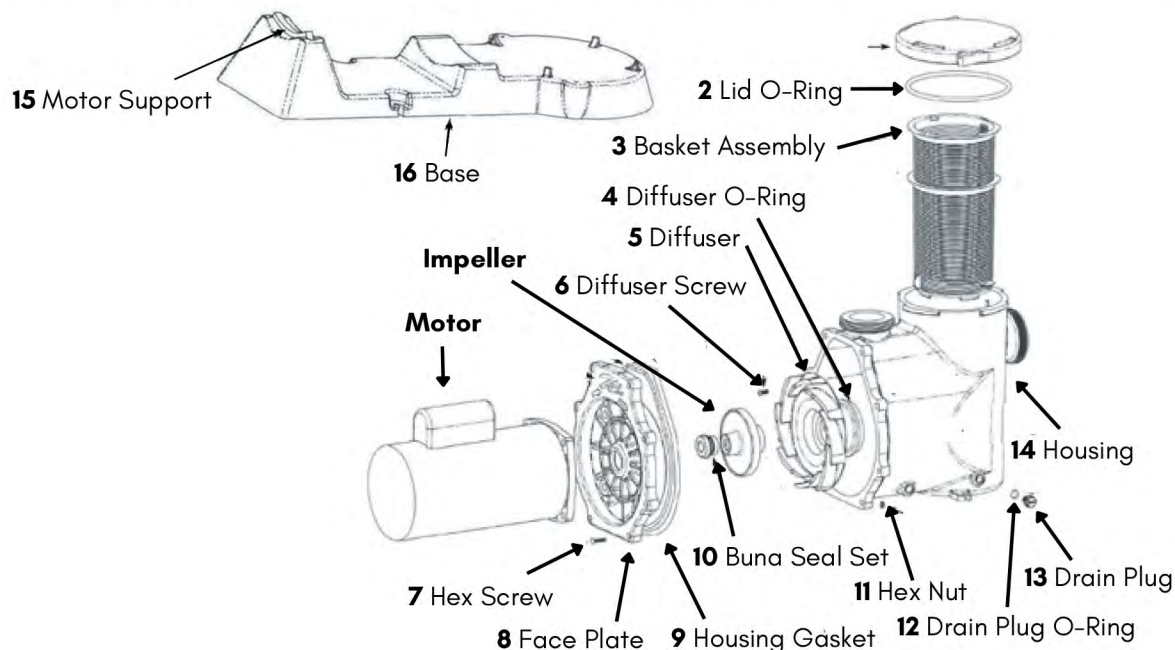
Dragon III



#	NAME	HP	MAX HEAD	GPH	MAX RPM	WATTS	VOLTS	ENCLOSURE	DIMENSIONS	IN/OUT	PRICE
V0.85-115V	Dragon III 7200 Variable Speed	0.85	52'	7200	3450			TEFC	30"x21"x14"	2"	
0332	Dragon III 12000 Dual Voltage Variable Speed	1.65	58'	12000	3450			TEFC		2"	
SNL-P3020	Dragon III 2HP Variable Speed	2			1725		230	TEFC	29"x19"x14"	2"	
SNL-P3021	Dragon III 3HP Variable Speed	3			1725		230	TEFC	29"x19"x14"	2"	

Replacement Parts

Part #	DESCRIPTION	PRICE	Part #	DESCRIPTION	PRICE
1	5201 Lid		10	Buna Seal Set (only sold in Dragon Master Seal Kit)	
2	5202 Lid O-Ring (also sold in Dragon Master Seal Kit)		11	5214 Hex Nut	
3	5203 Basket Assembly		12	5217 Drain Plug O-Ring (also sold in Dragon Master Seal Kit)	
4	Diffuser O-Ring (only sold in Dragon Master Seal Kit)		13	5216 Drain Plug	
5	5205-L Diffuser for 2hp and above - large		14	5204 Dragon Housing	
	5205-M Diffuser for 1hp-1.5hp - medium		15	5213 Motor Support	
	5205-SS Diffuser for less than 1hp - stainless steel		16	5218 Base	
6	5207 Diffuser Screw		-	7051 Dragon Master Seal Kit (parts 2, 4, 9, 10, 12)	
7	5215 Hex Screw		-	1107 Pump Union Assembly for 1/4hp, 1/3hp, & 3/4hp - 2"	
8	5211 Dragon Faceplate		-	1108 Pump Union Assembly for 1hp, 1.5hp, & 2hp - 2.5"	
9	5212 Housing Gasket (also sold in Dragon Master Seal Kit)		-	3242 Pump Union O-Ring	



All prices subject to change without notice due to fluctuating market.

Replacement Motors & Impellers

WAVE SERIES		
#	DESCRIPTION	PRICE
5106-0.125	Impeller for Wave I 4800	
5106-0.25	Impeller for Wave I 6000	
5106-0.25II	Impeller for Wave II 7200	
5106-0.33	Impeller for Wave II 8400	
5106-0.50	Impeller for Wave II 9000	
5106-1.00	Impeller for Wave II+ 11400	
5106-HS1.00	Impeller for Wave II 10000 High Speed	
5106-HS1.50	Impeller for Wave II 11000 High Speed	
5106-HS2.00	Impeller for Wave II 13000 High Speed	
5106-HS3.00	Impeller for Wave II 17000 High Speed	
5125-EME	Motor for Wave I 2700 Open Drip	
5125-Mar	Motor for Wave I 3400	
5111	Motor for Wave I 4800	
5113	Motor for Wave I 6000	
9062	Motor for Wave III 10800 Variable Speed	
5114	Motor for Wave II 7200	
5115	Motor for Wave II 8400	
5116	Motor for Wave II 9000	
5118	Motor for Wave II+ 11400	
5119	Motor for Wave II 10000 High Speed	
5120	Motor for Wave II 11000 High Speed	
5121	Motor for Wave II 13000 High Speed	
5122	Motor for Wave II 17000 High Speed	

DRAGON SERIES		
#	DESCRIPTION	PRICE
5208-0.25	Impeller for Dragon I 7000	
5208-0.33	Impeller for Dragon I 8000	
5208-0.75	Impeller for Dragon I 9000	
5208-1.00	Impeller for Dragon I 12000	
5208-1.50	Impeller for Dragon I 13500	
5208-2.00	Impeller for Dragon I 15500	
5228-1-0.50	Impeller for Dragon II 8100 Single Phase	
5228-1-0.75	Impeller for Dragon II 10200 Single Phase	
5228-1-1.00	Impeller for Dragon II 11100 Single Phase	
5228-1-1.5	Impeller for Dragon II 12000 Single Phase	
5228-3-0.50	Impeller for Dragon II 5200 Three Phase	
5228-3-0.75	Impeller for Dragon II 6000 Three Phase	
5228-3-1.00	Impeller for Dragon II 6600 Three Phase	
5228-3-2.00	Impeller for Dragon II 10800 Three Phase	
5228-3-3.00	Impeller for Dragon II 13800 Three Phase	
5228-3-5.00	Impeller for Dragon II 12500 Three Phase	
5208-0.25SS	Impeller for Dragon I 7000 (stainless steel)	
5208-0.33SS	Impeller for Dragon I 8000 (stainless steel)	
5208-0.75SS	Impeller for Dragon I 9000 (stainless steel)	
5208-1.00SS	Impeller for Dragon I 12000 (stainless steel)	
5208-1.50SS	Impeller for Dragon I 13500 (stainless steel)	
5219	Motor for Dragon I 7000	
5220	Motor for Dragon I 8000	
5221	Motor for Dragon I 9000	
5222	Motor for Dragon I 12000	
5223	Motor for Dragon I 13500	
5224	Motor for Dragon I 15500	
0601-MT	Motor for Dragon II 8100 Single Phase	
0602-MT	Motor for Dragon II 10200 Single Phase	
0603-MT	Motor for Dragon II 11100 Single Phase	
0604-MT	Motor for Dragon II 12000 Single Phase	
0631-MT	Motor for Dragon II 5200 Triple Phase	
0632-MT	Motor for Dragon II 6000 Triple Phase	
0633-MT	Motor for Dragon II 6600 Triple Phase	
0635-MT	Motor for Dragon II 10800 Triple Phase	
0636-MT	Motor for Dragon II 13800 Triple Phase	
0638-MT	Motor for Dragon II 12500 Triple Phase	
9061	Motor for Dragon III 7200 Variable Speed	
9666W	Motor for Dragon III 12000 Variable Speed	
SNL-3020	Motor for Dragon III 2HP Variable Speed	
9060-EZ	Motor for Dragon III 3HP Variable Speed	

Our pumps have:

- Custom built W Lim motors
- Saltwater/ozone resistance (buna seal, stainless shaft and screws, corrosion epoxy paint)
- Strong glass-filled ABS injection housing
- Custom built 3-phase available

All prices subject to change without notice due to fluctuating market.

More Pump Replacement Parts

#	DESCRIPTION	PRICE
1414	Clear SPA Air Valve - 2"	
1101	Leaf Trap - 1.5" (w/ union)	
1102	Leaf Trap - 2" (w/ union)	
1103	Leaf Trap Basket	
1095	Lid for 1.5" & 2" Leaf Trap	
1005	Motor Cover	
1099	O-Ring for 2" Leaf Trap	
1001	Pump Base - 15.25"x 8.25"x1" (large)	
1002	Pump Base - 6.5"x3.75"x3/4" (standard)	
1109	Pump Union Male Adaptor - 1.5"	
1110	Pump Union Male Adaptor - 2"	
1112	Rubber Coupling - 3"	
1113	Rubber Coupling - 4"	

Clear SPA Air Valve



Rubber Couplings



Leaf Traps & Baskets



Remember to clean the leaf basket periodically



Basket for Dragon



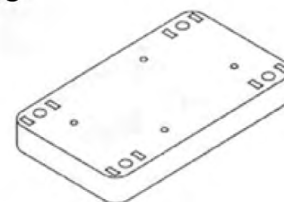
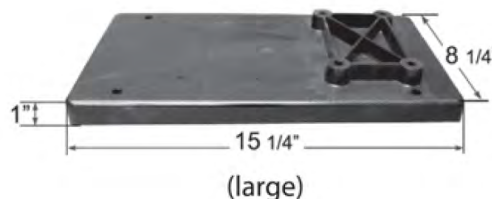
Pump Union Male Adaptor



Leaf Trap O-Rings and Lid



Pump Base



(standard)

All prices subject to change without notice due to fluctuating market.

Wave Series UVs

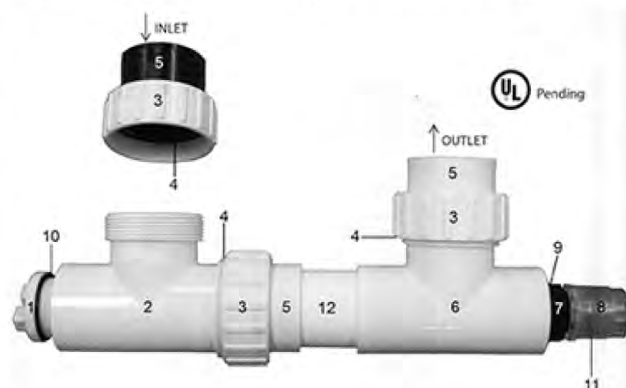
The Wave UV Sterilizer ensures efficient sterilization by producing high intensity light that will help reduce and control pond algae and harmful living pathogens. Each Wave UV is equipped with a viewing port for easy indication of lamp operation and can be customized in number of lamps. The T5 style quartz lamp runs continuously for up to 9,000 hours before reaching the end of its useful life. These clarifiers are ideal for residential use and feature inlets and outlets capable of rotation to ensure a perfect fit every time.

#	NAME	LAMPS	WATTS	H/O?	GPH	REC. POND SIZE	DIMENSIONS	SCH	IN/OUT	PRICE
W 14.8	Wave UV 14.8	1	14.8	no				40	2"	
3251	Wave UV 25	1	25	no	3600	1500 gal		40	2"	
3252	Wave UV 40	1	40	no	4080	2000 gal		40	2"	
3253	Wave UV 80	2	80	no	5400	4000 gal		40	2"	
3254	Wave UV 120	3	120	no	6600	6000 gal		40	2"	
3255	Wave UV 160	4	160	no	7200	10000 gal		40	2"	
3231-1	Wave UV 58	1	58	yes	3600	3500 gal		40	2"	
3232-2	Wave UV 116	2	116	yes	6960	7000 gal		40	2"	
3230	Wave UV 66	1	66	no				40	2"	

Replacement Parts

#	DESCRIPTION	PRICE
3261-14.8	Lamp - 14.8W	
3261-25	Lamp - 25W	
3261-40	Lamp - 40W	
3232	Lamp - 58W H/O	
3262-25	Quartz Sleeve - 25W	
3262-40	Quartz Sleeve - 40W	
3233	Quartz Sleeve - 58W	
6506-10.6CL	Quartz Sleeve - 66W	
3263-25	Ballast - 25W	
3263-40	Ballast - 40W	
3234-58	Ballast - 58W	
3234-116	Ballast - 116W	
3246	Power Supply - 25W (1 lamp)	
3247	Power Supply - 40W (1 lamp)	
3245	Power Supply - 58W (1 lamp)	
3507-10-P1	Power Supply - 66W (1 lamp)	
3248	Power Supply - 80W (2 lamp)	
3244	Power Supply - 116W (2 lamp)	
3249	Power Supply - 120W (3 lamp)	
3250	Power Supply - 160W (3 lamp)	

1. Male End Plug
2. Tee (Mipt x Fipt)
3. Union Lock Nut
4. Union O-Ring
5. Union O-Ring Flange
6. Tee (Slip x Mipt)
7. Male Adapter
8. Clear Female Coupling
9. 1" O-Ring
10. 1-1/2" O-Ring
11. Quartz Sleeve Seal
12. 2" PVC Pipe
13. Lamp (not shown)
14. Quartz Sleeve (not shown)



All prices subject to change without notice due to fluctuating market.

Sky Hawk Series UVs

If you're looking for a highly customizable high-output sterilization for your project, the Skyhawks are the series for you. These contractor-grade UV units provide high contact time, high killing power, and can be built to whatever size you need.



#	NAME	LAMPS	WATTS	H/O	GPH	DIMENSIONS	SCH	IN/OUT	PRICE
7105	Model 5	1	36	yes	3240	6" chamber	40	2"	
7115	Model 5	2	72	yes		6" chamber	40	2"	
7116	Model 5	3	108	yes		6" chamber	40	2"	
7109	Model 5	4	144	yes		6" chamber	40	2"	
7106	Model 10.3	1	58	yes	4980	6" chamber	40	2"	
7106-2	Model 10.3	2	116	yes		6" chamber	40	2"	
7113	Model 10.6	1	66	yes	4980	6" chamber	40	2"	
7112	Model 10.6	2	132	yes		6" chamber	40	2"	
7107	Model 20	1	86	yes	7080	6" chamber	40	2"	
7108	Model 40	1	119	yes	10320	6" chamber	40	2"	

Replacement Parts

#	DESCRIPTION	PRICE	#	DESCRIPTION	PRICE
6505-05C	Lamp - 36W Model 5		3507-10.3	Ballast - 66W Model 10.6	
6505-10C	Lamp - 58W Model 10.3		3507-20	Ballast - 86W Model 20	
6505-10.3CL	Lamp - 66W Model 10.6		3507-40	Ballast - 119W Model 40	
6505-20CL	Lamp - 86W Model 20		7301	Power Supply - 36W Model 5 (1 lamp)	
6505-40CL	Lamp - 119W Model 40		7302	Power Supply - 72W Model 5 (2 lamp)	
3506-05	Quartz Sleeve - 36W Model 5		7303	Power Supply - 108W Model 5 (3 lamp)	
3506-10	Quartz Sleeve - 58W Model 10.3		7304	Power Supply - 144W Model 5 (4 lamp)	
6506-10.3CL	Quartz Sleeve - 66W Model 10.6		7306	Power Supply - 58W Model 10.3 (1 lamp)	
3506-20	Quartz Sleeve - 86W Model 20		7307	Power Supply - 116W Model 10.6 (2 lamp)	
3506-40	Quartz Sleeve - 119W Model 40		7310	Power Supply - 86W Model 20 (1 lamp)	
3507-05	Ballast - 36W Model 5		7314	Power Supply - 119W Model 40 (1 lamp)	
3507-10	Ballast - 58W Model 10.3				

All prices subject to change without notice due to fluctuating market.

Desert Eagle Series UVs

Our high-output industrial-grade sterilizers have a high interior and exterior UV resistance and are able to support high wattage and high sun-exposure. These UVs feature strong Schedule 80 bodies and can be custom ordered to accommodate 2", 3", 4" or 6" inlet and outlets.

#	NAME	LAMPS	WATTS	H/O	MAX FLOW (gph)	DIMENSIONS	SCH	PRICE
3502-66	Model 610.6	1	66	yes			80	
3502-132	Model 610.6	2	132	yes			80	
3502-198	Model 610.6	3	198	yes			80	
3502-264	Model 610.6	4	264	yes			80	
3503-86	Model 620	1	86	yes	7080		80	
3503-172	Model 620	2	172	yes			80	
3503-258	Model 620	3	258	yes			80	
3503-344	Model 620	4	344	yes			80	
3504-119	Model 640	1	119	yes	10320		80	
3504-238	Model 640	2	238	yes			80	
3504-357	Model 640	3	357	yes			80	
3504-476	Model 640	4	476	yes			80	



Replacement Parts

#	DESCRIPTION	PRICE	#	DESCRIPTION	PRICE
3505-20L	Lamp - 86W H/O Model 620		3507-20-P2	Power Supply - 172W Model 620 (2 lamp)	
3505-40L	Lamp - 119W H/O Model 640		3507-20-P3	Power Supply - 258W Model 620 (3 lamp)	
3506-20Q	Quartz Sleeve - 86W Model 620		3507-20-P4	Power Supply - 344W Model 620 (4 lamp)	
3506-40Q	Quartz Sleeve - 119W Model 640		3570-40-P1	Power Supply - 119W Model 640 (1 lamp)	
3507-20B	Ballast - 86W Model 620		3507-40-P2	Power Supply - 238W Model 640 (2 lamp)	
3507-40B	Ballast - 119W Model 640		3507-40-P3	Power Supply - 357W Model 640 (3 lamp)	
3507-20-P1	Power Supply - 86W Model 620 (1 lamp)		3507-40-P4	Power Supply - 476W Model 640 (4 lamp)	

All prices subject to change without notice due to fluctuating market.

Condors

The Condor amalgam UVs utilize the highest output lamp rated at 600,000 micro watts, yielding high-grade sanitation perfect for residential pools and commercial and industrial applications. These UVs utilize fewer, high-output lamps to produce higher UV output and can be custom built to accommodate 2"-24" bodies and inlets/outlets. With a useful life of 12,000 hours and transmittance loss of only 50,000 microwatts/cm, it's no wonder our units can be found in natural pools, aquaculture, hatcheries, and water treatment plants across the country!

Call for custom sizes and pricing.



#	NAME	LAMPS	WATTS	H/O	GPH	DIMENSIONS	SCH
3271	Condor 168	1	168	yes		6" chamber	80
3272	Condor 336	2	336	yes		6" chamber	80
3273	Condor 504	3	504	yes		6" chamber	80
3274	Condor 672	4	672	yes		6" chamber	80
3201	Condor 200	1	200	yes		6" chamber	80
3202	Condor 400	2	400	yes	1800	6" chamber	80
3203	Condor 600	3	600	yes	3000	6" chamber	80
3204	Condor 800	4	800	yes	3000	6" chamber	80
3211	Condor 300 - 6"	1	300	yes	12000	6" chamber	80
3212	Condor 600 - 6"	2	600	yes	12000	6" chamber	80
3213	Condor 900 - 6"	3	900	yes	12000	6" chamber	80
3214	Condor 1200 - 6"	4	1200	yes	7500	6" chamber	80
3217-1	Condor 300 - 8"	1	300	yes		8" chamber	80
3217-2	Condor 600 - 8"	2	600	yes	4020	8" chamber	80
3217-3	Condor 900 - 8"	3	900	yes	6000	8" chamber	80
3217-4	Condor 1200 - 8"	4	1200	yes	6000	8" chamber	80
3217-5	Condor 1500 - 8"	5	1500	yes	6000	8" chamber	80
3217-6	Condor 1800 - 8"	6	1800	yes	18000	8" chamber	80
3218-1	Condor 300 - 10"	1	300	yes		10" chamber	80
3218-2	Condor 600 - 10"	2	600	yes		10" chamber	80
3218-3	Condor 900 - 10"	3	900	yes	21000	10" chamber	80
3218-4	Condor 1200 - 10"	4	1200	yes	24000	10" chamber	80
3218-5	Condor 1500 - 10"	5	1500	yes		10" chamber	80
3218-6	Condor 1800 - 10"	6	1800	yes		10" chamber	80
3218-7	Condor 2100 - 10"	7	2100	yes	24000	10" chamber	80
3219-1	Condor 300 - 12"	1	300	yes		12" chamber	80
3219-2	Condor 600 - 12"	2	600	yes		12" chamber	80
3219-3	Condor 900 - 12"	3	900	yes	21000	12" chamber	80
3219-4	Condor 1200 - 12"	4	1200	yes		12" chamber	80
3219-5	Condor 1500 - 12"	5	1500	yes	15000	12" chamber	80
3219-6	Condor 1800 - 12"	6	1800	yes	60000	12" chamber	80
3219-7	Condor 2100 - 12"	7	2100	yes	60000	12" chamber	80
3219-8	Condor 2400 - 12"	8	2400	yes	30000	12" chamber	80
3219-14T	Condor 2400 - 14"	8	2400	yes	30000	14" chamber	80

All prices subject to change without notice due to fluctuating market.

Replacement Parts

#	DESCRIPTION	PRICE
168WA	Lamp - 168W H/O	
3206	Lamp - 200W H/O	
3209	Lamp - 300W H/O	
3205	Quartz Sleeve - 168W	
3208	Quartz Sleeve - 200W	
3210	Quartz Sleeve - 300W	
3207	Ballast - 168W, 200W, or 300W	
3271-P	Power Supply - 168W (1 lamp)	
3272-P	Power Supply - 336W (2 lamp)	
3273-P	Power Supply - 504W (3 lamp)	
3274-P	Power Supply - 672W (4 lamp)	
3261-1	Power Supply - 200W or 300W (1 lamp)	
3261-2	Power Supply - 400W or 600W (2 lamp)	
3261-3	Power Supply - 600W or 900W (3 lamp)	
3261-4	Power Supply - 800W or 1200W (4 lamp)	
3261-5	Power Supply - 1500W (5 lamp)	
3261-6	Power Supply - 1800W (6 lamp)	
3261-7	Power Supply - 2100W (7 lamp)	
3261-8	Power Supply - 2400W (8 lamp)	
3261-9	Power Supply - 2700W (9 lamps)	

All prices subject to change without notice due to fluctuating market.

Waves Series Filters

Our signature Wave Series filters feature three unique filtration devices. The **Wave Bio-Reactor Settlement Tank** contain floating media that provides biofiltration. The **Vortex Filter** uses a vortex bottom for mechanical filtering with space above it for biological filtering. The **Vortex Settlement Tank** provides excellent mechanical filtering by settling solids to the bottom of the vortex shaped bottom. At recommended flow rates, it is possible to remove almost all of the suspended solids. All Wave Series filter devices feature three outlet ports that allow for any configuration and dome-shaped lids that prevents rain, leaves, and other matter from accumulating on top. With an industrial strength body made of poly UV resistant material, these filters will not deteriorate under long-term sun exposure.

#	NAME	GPH	REC. POND SIZE	MEDIA VOL.	WATER VOL.	IN/OUT	PRICE
2501	Wave 24 Vortex Filter		1000 gal	4 ft ³	24 ft ³	3"	
2502	Wave 24 Vortex Settlement Tank		1000 gal		24 ft ³	3"	
2505	Wave 24 Bioreactor Settlement Tank		1000 gal		24 ft ³	3"	
2701	Wave 36 Vortex Filter		5000 gal	10 ft ³	36 ft ³	4"	
2702	Wave 36 Vortex Settlement Tank		5000 gal		36 ft ³	4"	
2705	Wave 36 Bioreactor Settlement Tank		5000 gal		36 ft ³	4"	
2704	Wave 48 Vortex Filter		15000 gal			4"	
2706	Wave 48 Vortex Settlement Tank		15000 gal			4"	
2707	Wave 48 Bio Reactor Settlement Tank		15000 gal			4"	

Bio-Reactor



Vortex Filter



Vortex Settlement Tank



All prices subject to change without notice due to fluctuating market.

For the highest level of clarity and filtration, our bio-reactor, vortex filter, and vortex settlement tank can be combined into a top-tier multifilter system.

Vortex Settlement Tank



Vortex Filter



Bio-Reactor



Replacement Parts

#	DESCRIPTION	PRICE
2502	Body & Cover for Wave 24	
2604	Body & Cover for Wave 36	
2709	Body & Cover for Wave 48	
2503	Stand for Wave 24	
2703	Stand for Wave 36	
2708	Stand for Wave 48	
1229	Flange Fittings for Wave 24 - 3"	
1230	Flange Fittings for Wave 36 - 4"	
1231	Flange Fittings for Wave 48 - 6"	
1232	Flange Fittings for Wave 48 - 8"	
4902	Floating Media - 10 lbs/box, 1 ft ³	
4904	Sinking Media - 12 lbs/box, 1 ft ³	
3005	Max Air Blower - 1 hp	
3006	Max Air Blower - 2 hp	
3105	Japanese Filter Mat - 40"x80"	
3106	Round Japanese Filter Mat - 24"	
1814	Slot Pipe - 2" diameter (sch 40)	
1815	Slot Pipe - 3" diameter (sch 40)	
1816	Slot Pipe - 4" diameter (sch 40)	

Floating Media

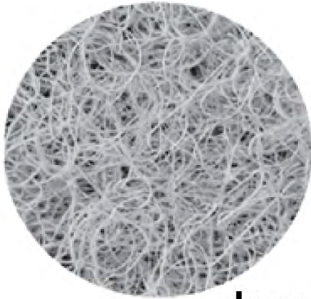


Sinking Media



Air Blower

Slot Pipe



Japanese Filter Mat

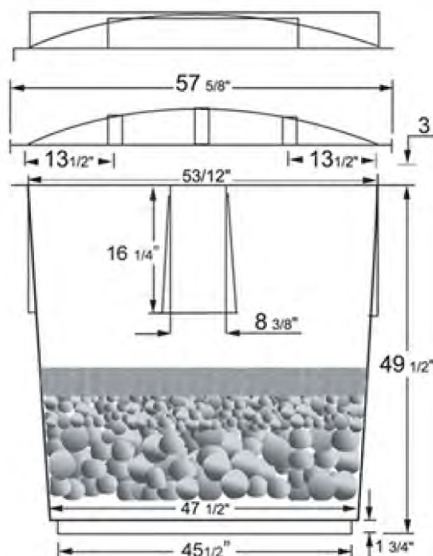
All prices subject to change without notice due to fluctuating market.

BioWaves Series Filters



For ponds and pools with organic matter, our BioWave filters are high quality, energy efficient and high performing filters that contain larger media, allowing for more flow while still providing quality biological filtration. They are designed to preserve the delicate useful bacteria during backwash and to provide a large surface area for the bacteria to live and flourish. The BioWaves utilize a backwashing technique using a blower system that agitates the water to produce "tumbling" during backwash. The blower pushes air into the filter causing the media to mix and tumble. This results in cleaning bioflocks that are attached to each piece while preserving beneficial bacteria within the filter. Great for general filtering purposes.

#	NAME	GPH	REC. POND SIZE	MEDIA VOL.	WATER VOL.	IN/OUT	PRICE
2401	Bio Wave Plus Filter 36	3000	6000 gal	2.5 ft ³	36 ft ³	2"	
2402	Bio Wave Plus Filter 48	6180	8000 gal	3.5 ft ³	48 ft ³	2"	
2403	Bio Wave Plus Filter 60	6960	10000 gal	4.5 ft ³	60 ft ³	2"	



EZR Series Filter

Our EZR filter provides layered sand and gravel filtering as close to natural filtering processes as possible while requiring less maintenance than other filtering devices. Upflowing through different levels of natural media mechanically traps and breaks down debris and performs biological filtering while offering unmatched polishing capabilities. This filter features a blower for extremely easy backwashing and preformed flat spots for optional bulkheads.

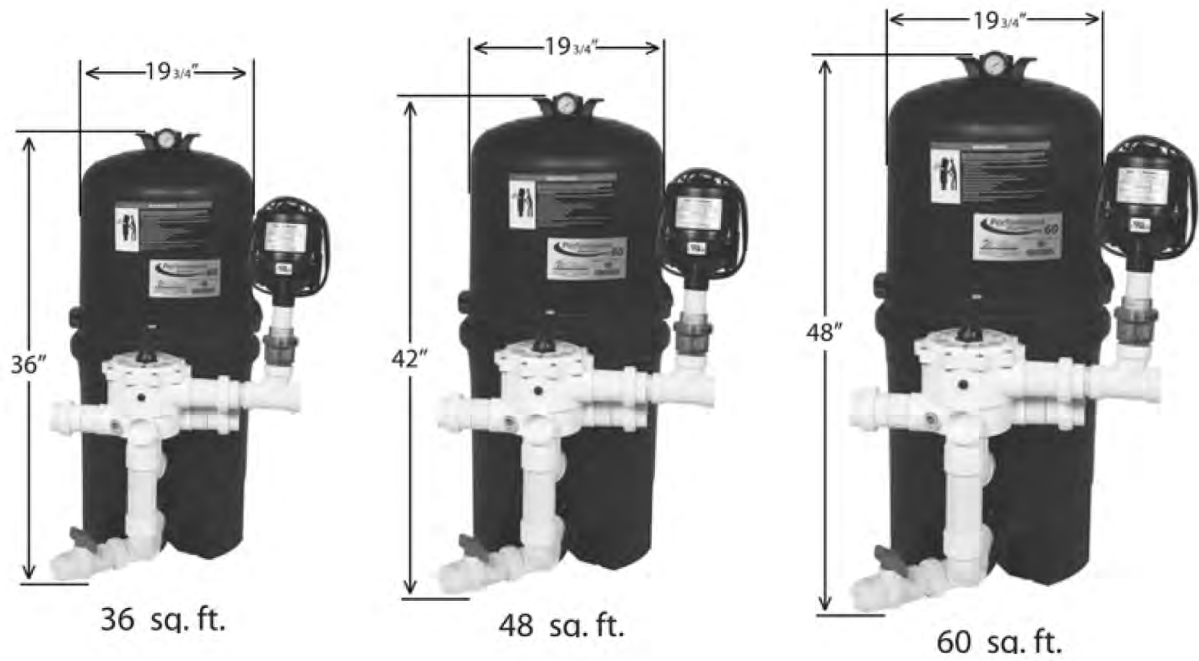
#	NAME	GPH	REC. POND SIZE	MEDIA VOL.	WATER VOL.	IN/OUT	PRICE
3002	EZR Biological Filter		5000 gal				

All prices subject to change without notice due to fluctuating market.

Performance Bead Series Filters

Our performance bead filters are engineered to function with low pressure, helping with energy efficiency. The fine, sinking media allows mechanical and biological filtration and expert-level polishing. The rinse cycle feature prerinses floating media after backwashing and discharges the rinsed water into a waste line. This filter also features a bottom sludge drain which allows heavy settlement to discharge from the bottom without disturbing the media. Finally, a filter bypass allows complete isolation of the filter media from your pond without disturbing normal water flow.

#	NAME	GPH	REC. POND SIZE	MEDIA VOL.	WATER VOL.	IN/OUT	PRICE
2321	Performance Bead Filter 36	3000	2500-5000 gal	2.5 ft ³	36 ft ³	2"	
2322	Performance Bead Filter 48	3900	5000-8000 gal	3.5 ft ³	48 ft ³	2"	
2323	Performance Bead Filter 60	4500	8500-10000 gal	4.5 ft ³	60 ft ³	2"	



All prices subject to change without notice due to fluctuating market.

Plumbing



VALVE SCREENS		
#	DESCRIPTION	PRICE
1201	1/2"	
1202	3/4"	
1203	1"	
1204	1.5"	
1205	2"	



BASKET VALVE SCREENS		
#	DESCRIPTION	PRICE
1206	1.5"	
1207	2"	
1208	3"	



UNIONS		
#	DESCRIPTION	PRICE
1223	Union - 1" (FloControl)	
1223W	Union - 1" (WaterWay)	
1224	Union - 1.5" (FloControl)	
1224W	Union - 1.5" (WaterWay)	
1225	Union - 2" (FloControl)	
1225W	Union - 2" (WaterWay)	
1226	Union - 3" (FloControl)	



BULKHEAD FITTINGS		
#	DESCRIPTION	PRICE
1209	1/2"	
1210	3/4"	
1211	1"	
1212	1.5"	
1213	2"	
1214	3"	
1215	4"	



PVC BULKHEAD FITTINGS		
#	DESCRIPTION	PRICE
1216	3/4" (threaded)	
1217	1" (threaded)	
1218	1" (slip)	
1219	1.5" (threaded)	
1220	1.5" (slip)	
1221	2" (threaded)	
1222	2" (slip)	



PVC FLEXIBLE PIPES		
#	DESCRIPTION	PRICE
1310	1/2"	
1311	3/4"	
1312	1"	
1313	1.5"	
1314	2"	
1315	3"	
1316	4"	

All prices subject to change without notice due to fluctuating market.

Plumbing



MIXING EDUCTORS		
#	DESCRIPTION	PRICE
1304	3/4"	
1305	1.5"	
7080	Directional Jet	



PVC SWING CHECK VALVE		
#	DESCRIPTION	PRICE
1402	PVC Swing Check Valve - 1.5" (slip)	
1401	PVC Swing Check Valve - 1" (slip)	
1403	PVC Swing Check Valve - 2" (slip)	
1404	PVC Swing Check Valve - 3" (slip)	
1405	PVC Swing Check Valve - 4" (slip)	
1406	Clear PVC Swing Check Valve - 1.5"	
1407	Clear PVC Swing Check Valve - 2"	
1408	Clear PVC Swing Check Valve - 3"	
1409	Clear PVC Swing Check Valve - 4"	

PVC KNIFE GATE VALVES		
#	DESCRIPTION	PRICE
1504	1.5"	
1505	2"	
1506	3"	
1507	4"	
1505S	2" (stainless steel paddle)	
1506S	3" (stainless steel paddle)	
1507S	4" (stainless steel paddle)	
1508S	6" (stainless steel paddle)	
1509S	8" (stainless steel paddle)	
1510S	10" (stainless steel paddle)	
1511S	12" (stainless steel paddle)	



PVC TRUE UNION SWING CHECK VALVE		
#	DESCRIPTION	PRICE
1410	PVC True Union Swing Check Valve - 1.5" (slip)	
1411	PVC True Union Swing Check Valve - 2" (slip)	
1412	Clear PVC True Union Swing Check Valve - 1.5" (slip)	
1413	Clear PVC True Union Swing Check Valve - 2" (slip)	



3-WAY VALVES		
#	DESCRIPTION	PRICE
1502	1.5"x2" (black)	
1503	2"x2.5" (black)	



PVC SINGLE ENTRY BALL VALVES		
#	DESCRIPTION	PRICE
1531	1.5"	
1532	2"	
1533	3"	
1534	4"	



PVC UTILITY BALL VALVES		
#	DESCRIPTION	PRICE
1541	1.5"	
1542	2"	
1543	3"	
1544	4"	

All prices subject to change without notice due to fluctuating market.

Plumbing



BALL VALVES (W/ EPDM SEAL)		
#	DESCRIPTION	PRICE
1521	1/2"	
1522	3/4"	
1523	1"	
1524	1.5"	
1525	2"	



PVC BALL VALVES		
#	DESCRIPTION	PRICE
1511	1"	
1512	1.5"	
1513	2"	

Miscellaneous

LA-45B



LA-80B



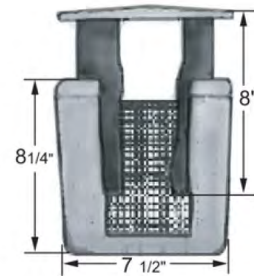
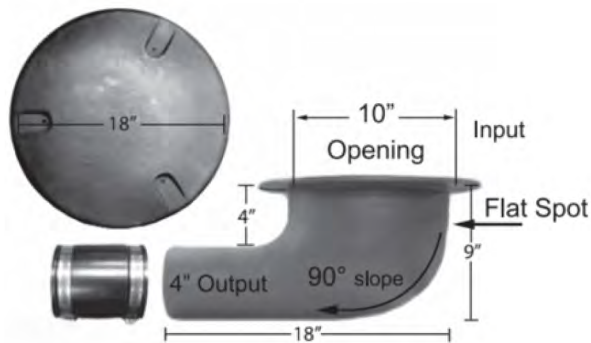
LA-100/120



MEDO AIR PUMPS							
#	MODEL	VOLTAGE	MAX PRESS.	MAX FLOW	FREQUENCY	WEIGHT	PRICE
0906-45	LA-45B	115 AC	4.8 psig	1.84 cfm	60 hz	6.6 lbs	
0906-80	LA-80B	115 AC	5.05 psig	3.32 cfm	60 hz	11.7 lbs	
0906-120	LA-120	115 AC	5.47 psig	5.16 cfm	60 hz	20.7 lbs	

All prices subject to change without notice due to fluctuating market.

Miscellaneous



BOTTOM DRAINS		
#	DESCRIPTION	PRICE
1705	2" (concrete)	
1704	2" (liner)	
1702	3" (concrete)	
1701	4" (concrete)	
1703	Ring for Liner	

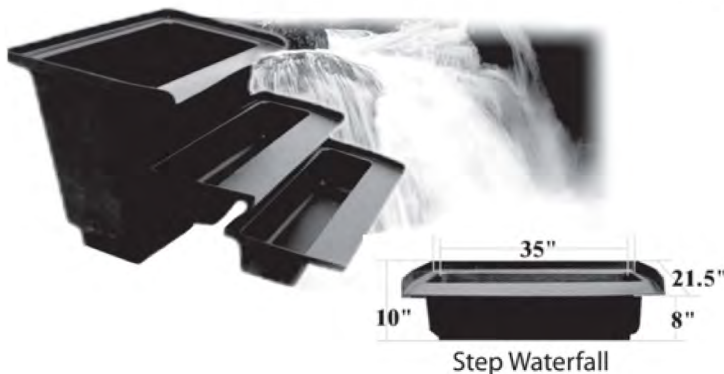
SKIMMERS		
#	DESCRIPTION	PRICE
1603	No-Niche Skimmer	
1603B	No-Niche Skimmer Basket	

WATERFALL FILTERS		
#	DESCRIPTION	PRICE
1902	Waterfall Filter - 95 gal	
1903	Miniature Barrel Waterfall Filter (w/ spout)	
1904	Miniature Barrel Waterfall Filter (w/o spout)	

Waterfall Filter



3-Step Waterfall



Miniature Barrel Waterfall Filter



All prices subject to change without notice due to fluctuating market.

Miscellaneous

TUBS		
#	DESCRIPTION	PRICE
3701	Measurement Tub - 39"x18"x12"	
3701C	Measurement Tub Cover	
3703	Viewing Tub - 4 lbs, 19.5 gal (light duty)	
3704	Viewing Tub - 7 lbs, 23 gal (medium duty)	
3705	Viewing Tub - 9 lbs, 23 gal (heavy duty)	
3706	Viewing Tub - 15 lbs, 55 gal (heavy duty)	

Measurement Tub

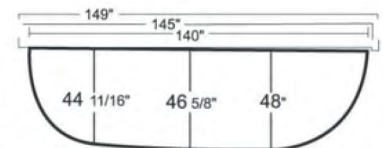
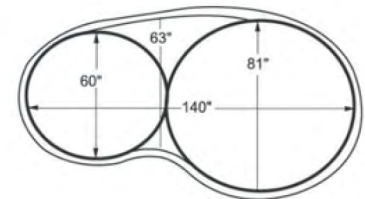
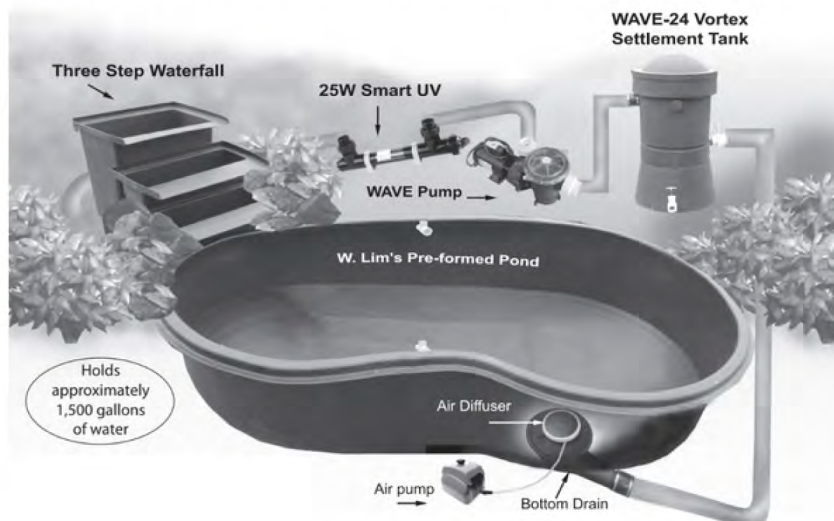


Viewing Tubs



PREFORMED KOI POND		
#	DESCRIPTION	PRICE
3801	Preformed Koi Pond - 1500 gal (includes bottom drain, 2 venturi jets. and no-niche skimmer)	

Recommended set-up for Preformed Koi Pond



All prices subject to change without notice due to fluctuating market.